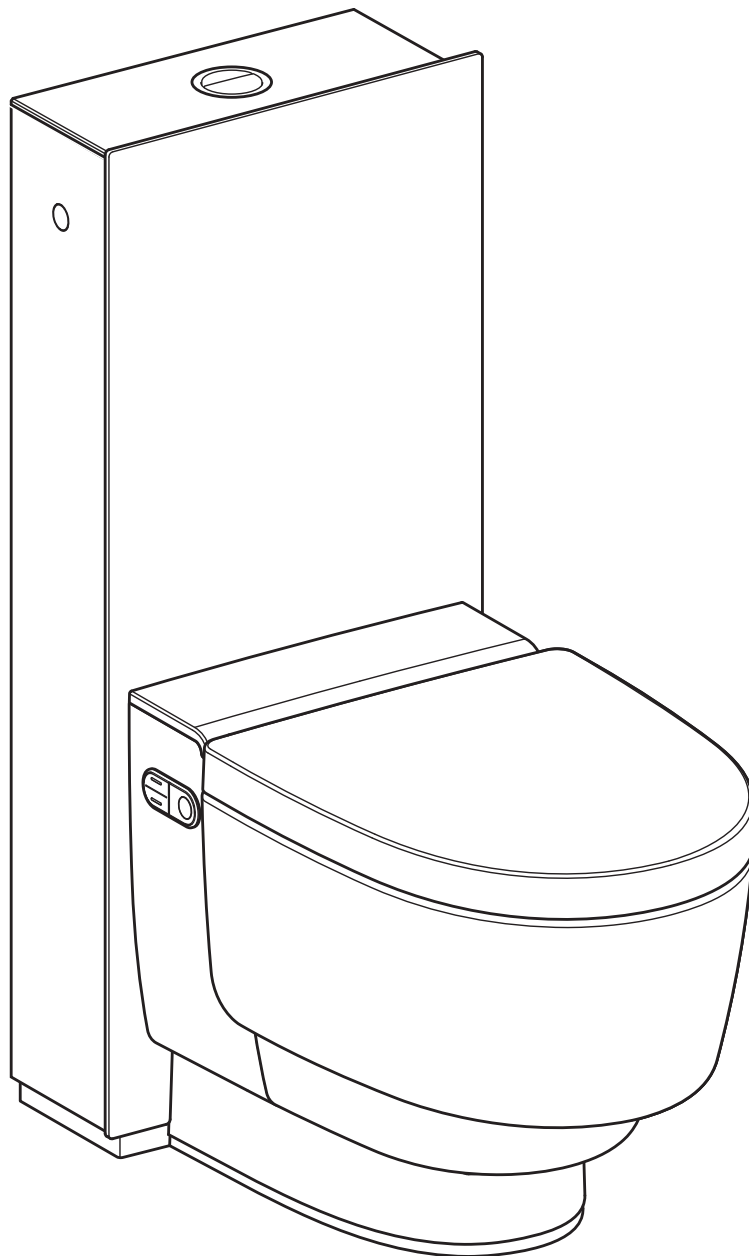


GEBERIT AQUACLEAN MERA CLASSIC

 **GEBERIT**



USER MANUAL



968.548.00.0(06)

Table of contents

For your safety	6
Who is this product suitable for?	6
How is this product used?	6
What should you avoid?	6
Misuse	6
General safety notes	6
Explanation of warning notes	8
Overview of symbols on the product	8
Register your device	9
Getting to know your device	10
About Geberit AquaClean devices	10
Functional overview.....	10
The device at a glance	11
Operating concept	13
About the operating concept	13
Front side of the remote control	13
Rear side of the remote control	14
Status LED on the remote control	15
Lateral control panel.....	16
Status LED on the lateral control panel.....	16
Switching on the device.....	17
Switching off the device.....	18
Geberit App	19
Checking compatibility.....	19
Downloading the Geberit Home app	19
Using the Geberit Home App	20
How to use the device	21
Getting started.....	21
Using the anal shower	22
Switching the oscillating motion of the anal shower on and off	22
Using the Lady shower	23
Using the dryer	23
Releasing the flush.....	24
Activating automatic flush actuation	25
Activate barrier-free mode	26
Adjusting the shower procedure to your personal needs	27
Setting the spray intensity	27
Setting the spray arm position.....	27

Setting the dryer air intensity	28
Saving user profiles	28
Calling up user profiles	29
Saving a personal user profile in the Geberit Home App	29
How to program the device	30
Overview of the programming options.....	30
Device settings main menu	30
Device settings menu	31
Function settings menu.....	32
System settings menu	36
Personal settings main menu	38
User menu	38
Care and maintenance main menu	40
Care and maintenance menu	40
Help main menu	42
Help menu	42
Cleaning and descaling the device	44
Care Instructions	44
General cleaning recommendations.....	44
Automatic water replacement.....	44
Targeted disinfection	45
Suitable cleaning agents and cleaning equipment	45
Care instructions for smooth surfaces.....	47
Care instructions for sanitary ceramic appliances.....	47
Care instructions for WC seat	48
Cleaning the WC seat ring	48
Cleaning the WC lid and housing	50
Cleaning shower and dryer arm via remote control display	51
Cleaning the shower and dryer arm via the side control panel or buttons on the remote control	54
Descaling the device	56
Device descaling message.....	58
Troubleshooting	59
Troubleshooting.....	59
The shower toilet is without function	60
Other functional errors.....	61
Troubleshooting for the remote control	62
Replacing the remote control battery	63
Re-assigning the remote control	64
Replacing the ceramic honeycomb filter	65
Sustainability	68
Geberit Group and sustainability	68
Ecodesign – ecobalance	68

Tips for reducing the ecological footprint.....	68
Disposal	69
Disposal of waste electrical and electronic equipment.....	69
End user warranty	70
Technical data and conformity	71
Technical data	71
Simplified EU Declaration of Conformity	71
Simplified UK Declaration of Conformity	71
Contact	72
Headquarters.....	72
Europe.....	72
Africa and Middle East	75
Asia	75
Other countries	76

For your safety

Who is this product suitable for?

The Geberit AquaClean shower toilet can be used by children aged 3 years and up, as well as by persons with reduced physical, sensory or mental capabilities or lack of experience and knowledge, provided that they are under supervision or have been taught how to use the device safely and understand the hazards involved. Children must not play with the device. Children must not carry out cleaning or user maintenance without supervision.

How is this product used?

The product is suitable for the following application purposes and areas of use:

- as a shower toilet:
 - for cleaning the anal area
 - for cleaning the outer vaginal area
 - for odour extraction
- for installation in heated indoor areas
- for connection to the drinking water system
- for operation with water from reverse osmosis systems

What should you avoid?

The product must be used as intended. Do not:

- leave the WC seat ring during the shower procedure
- place loads or objects on the WC lid
- immerse the remote control in liquid
- operate without plug for Geberit AquaClean descaling agent

Misuse

Geberit accepts no liability for the consequences arising from misuse.

General safety notes

The following safety notes apply for the entire duration of the product's life cycle:

- Read the user manual before the first use to familiarise yourself with the use of the product.
- Save the user manual for later reference or print them out.
- Impurities in the filter could lead to contamination of the breathing air. In order to preclude any health risks and ensure proper functioning, the filter must be replaced annually.
- Do not use the device if it is damaged. If possible, isolate the device from the power supply system and contact Geberit customer service.
- Do not open the device. It does not contain any components for the user to service or repair.
- Do not perform any changes or additional installations. Modifying the device runs the risk of danger of death.
- Repairs may only be carried out by authorised skilled persons using original spare parts.
- Only original accessories may be used.
- Operation and maintenance work may only be performed by the operator or user as described in this user manual.

- Always use the current version of the installation manual for installing the device if the Geberit AquaClean has been removed (e.g. if you move house).
 - The Geberit AquaClean must only be connected to a mains voltage conforming to the specification plate.
 - Observe the manufacturer information at all times regarding the use of cleaning and descaling agents.
-



This document contains warning notes at various points. Warning notes are usage and situation-specific safety notes. They provide warnings on specific hazards.



These instructions correspond to the state of the device technology at the time of publication. Geberit reserves the right to make changes in terms of further development.

A current version of this and other documents is available online: <http://catalog.geberit.com>.

Explanation of warning notes

Warning notes are placed at the location at which the hazard may occur.

Warning notes are structured as follows:




WARNING

Nature and source of the hazard



Possible consequences if the hazard is ignored.

- ▶ Measures to prevent the hazard.

The following signal words are used to indicate residual hazards in warning notes and important information.

Symbol	Signal word and meaning
	DANGER The signal word denotes a hazard with a high degree of risk which, if not avoided, will result in death or serious injury.
	CAUTION The signal word denotes a hazard with a low degree of risk which, if not avoided, could result in minor or moderate injury.
	ATTENTION The signal word denotes a hazard, which, if not avoided, may result in material damage.
	Symbol only. Refers to important information

Overview of symbols on the product

Symbol	Meaning
	Read the safety notes and operating instructions/operation manual before commissioning the product.
	Danger of fatal electric shock

Register your device

Warranty registration

Extend the warranty period of your Geberit AquaClean for free. Register for this within 90 days from the installation date.



In the third year of the warranty period, Geberit shall supply spare parts free of charge in the event of any material or manufacturing faults, provided the product has been installed and put into operation by an installation company.

By web link:

<https://www.geberit-aquaclean.com/landing-pages/onboarding>

By smartphone
or tablet:



Android:



iOS:



Via the Geberit Home app:

Getting to know your device

About Geberit AquaClean devices

The Geberit AquaClean device is a WC with integrated shower function. The device also fulfils all the functions of a conventional WC. Additional functions are subject to the design of your product.

Functional overview

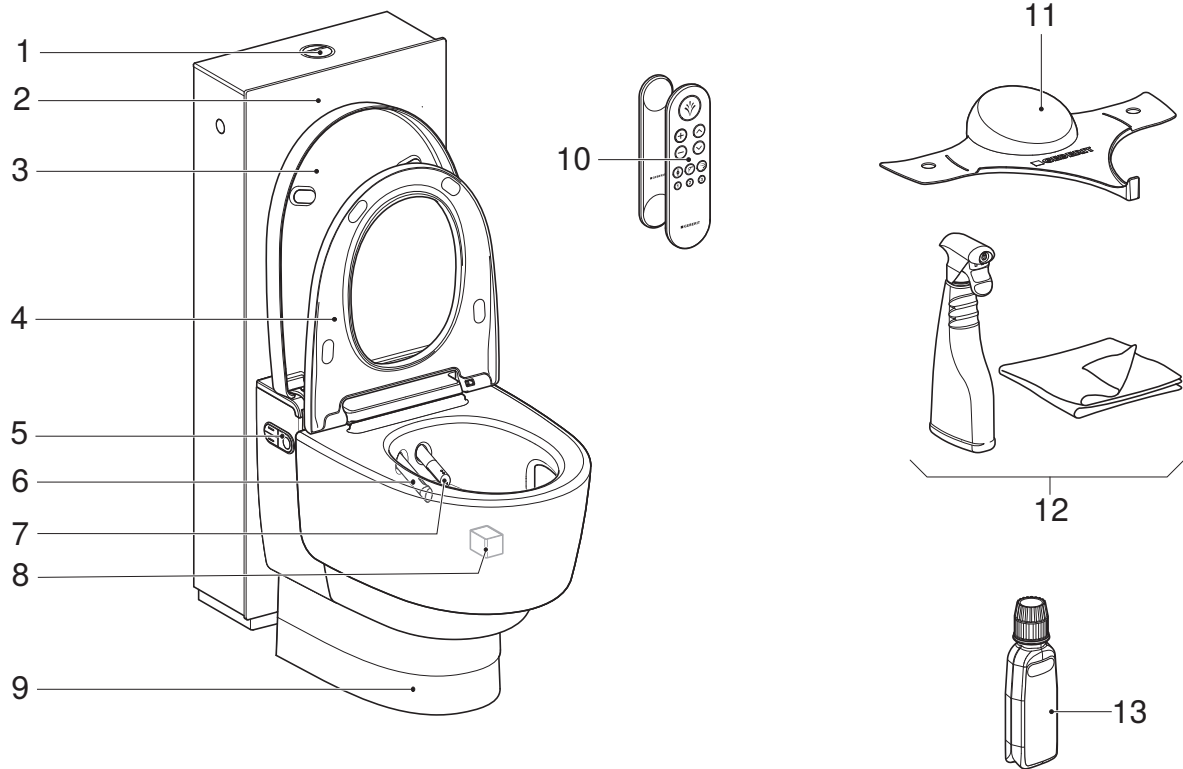
Hygiene functions:

- TurboFlush technology
- Odour extraction in the WC ceramic appliance
- WhirlSpray shower technology with individual spray arm position
- Spray arm with oscillating motion
- Extendible Lady shower nozzle integrated into the spray nozzle with individual spray arm position
- Automatic spray arm cleaning before and after each shower procedure
- Dryer functionality via dryer arm
- Descaling programme

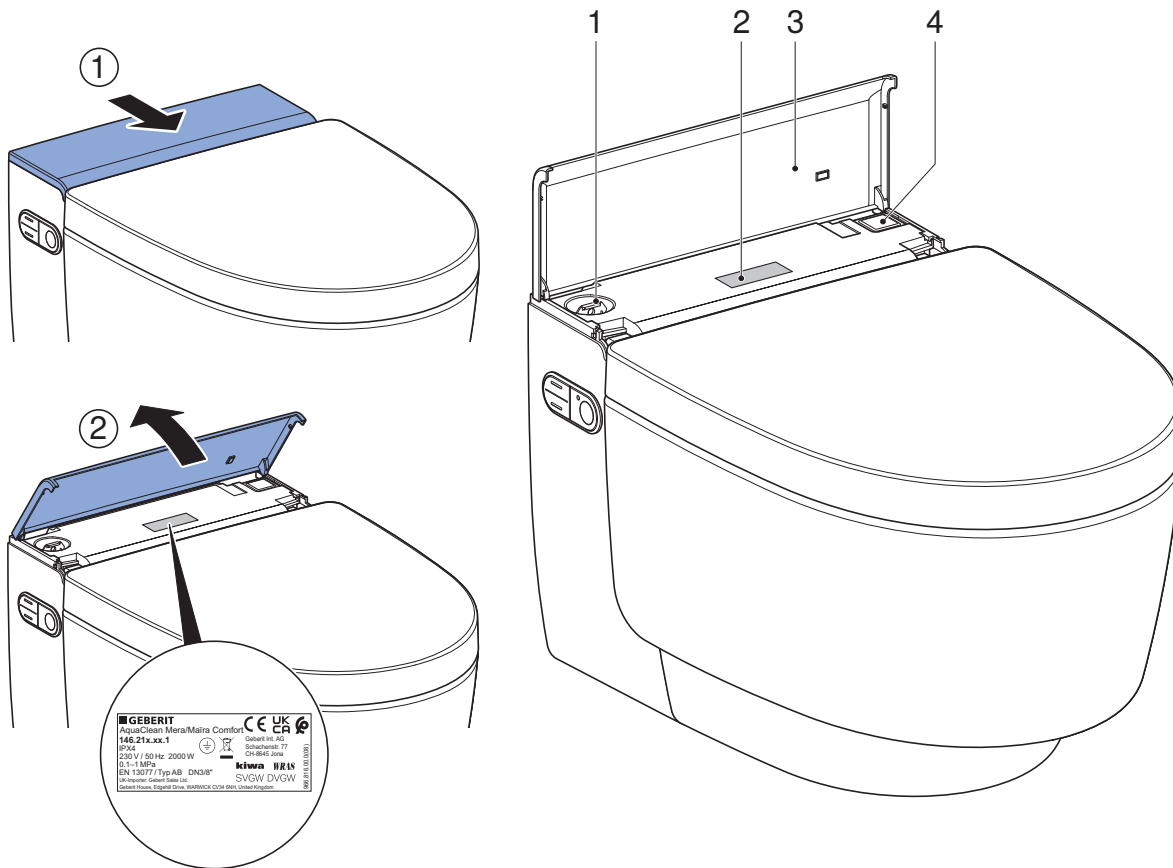
Comfort functions:

- Spray intensity can be selected
- Dryer air intensity can be selected
- WC seat ring and WC lid with SoftClosing
- Remote control with ink display
- All functions can be operated via remote control
- Three individual user profiles can be stored
- Shower toilet functions can be operated via a lateral ergonomic control panel
- Automatic flush function

The device at a glance



- 1 Flush button
- 2 Casing
- 3 WC lid
- 4 WC seat ring with user recognition and QuickRelease function
- 5 Lateral control panel with status LED
- 6 Dryer arm with dryer nozzle
- 7 Spray arm with spray nozzle and Lady shower nozzle
- 8 Ceramic honeycomb filter (art. no. 242.999.00.1)
- 9 Cover
- 10 Remote control with magnetic wall-mounted holder
- 11 Spray shield
- 12 Geberit AquaClean cleaning set (art. no. 242.547.00.1)
- 13 Geberit AquaClean descaling agent (art. no. 147.040.00.1)



- 1 Filling opening with plug for Geberit AquaClean descaling agent
- 2 Specification plate with serial number
- 3 Design cover with magnet
- 4 Power switch

Some components and the consumables listed below can be ordered directly via the Geberit Home app, the Geberit spare parts catalogue or via the Geberit Web Shop.

Consumables	Information
Geberit AquaClean cleaning set	Art. no. 242.547.00.1
Geberit AquaClean descaling agent	Art. no. 147.040.00.1
Geberit AquaClean descaling agent set (4 pcs)	Art. no. 147.047.00.1
Geberit AquaClean descaling agent set (10 pcs)	Art. no. 147.048.00.1
AquaClean Mera spray nozzle	Art. no. 243.241.11.1
AquaClean Mera dryer nozzle	Art. no. 243.245.11.1
AquaClean Mera remote control	Art. no. 245.840.01.1

Operating concept

About the operating concept

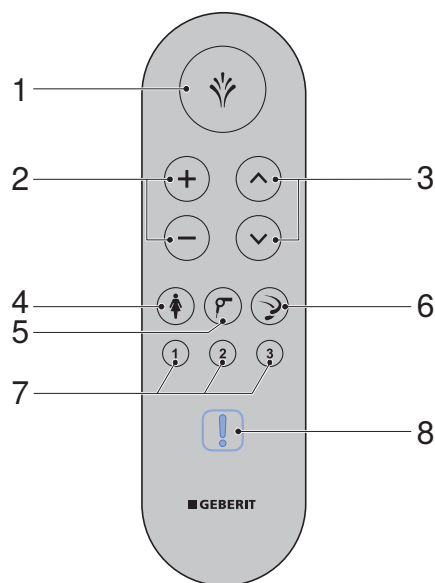
The shower toilet can be operated via remote control, the lateral control panel on the shower toilet and the Geberit Home App.



The remote control function of the Geberit AquaClean shower toilet is deactivated while the shower toilet is connected to the Geberit Home App.

Front side of the remote control

All functions for daily use can be operated from the front side of the remote control.



- 1 <Shower> button:
 - start and stop the spray functionality
 - stop dryer functionality and Lady shower
- 2 <+>/<-> buttons: increase or decrease the spray/dryer air intensity
- 3 <Up>/<down> arrow keys: set spray arm position (spray arm forwards/backwards)
- 4 <Lady shower> button: start and stop the Lady shower
- 5 <Dryer> button: start and stop the dryer
- 6 <Toilet flush> button: start and stop toilet flush
- 7 <User profile> buttons: select the user profiles 1–3
- 8 Status LED (only visible if necessary)

Rear side of the remote control

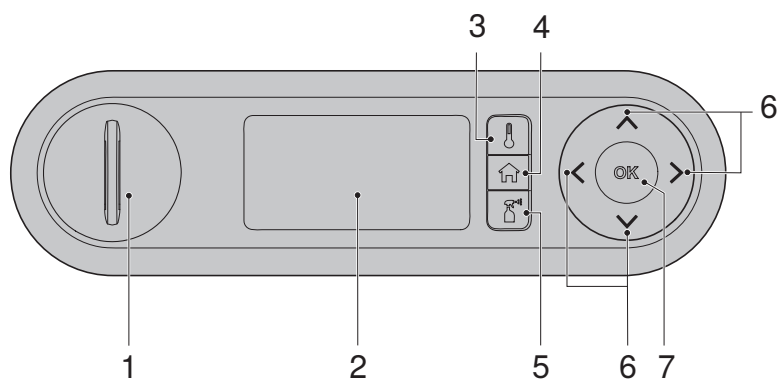
You can access various settings and additional functions from the rear side of the remote control.

i To extend the battery life, the display switches to standby mode after a certain time.

i If the remote control from year of manufacture 2024 is used with an older firmware version on the device, not all functions are available:

- Display only shows 2 lines
- No LED display on the front of the remote control
- No function via the three preset buttons
- No function via the OK button

To be able to use all functions, carry out a firmware update with the Geberit Home app (firmware version \geq v 28.0).



- 1 Battery compartment
- 2 Ink display
- 3 <Temperature> preset button
- 4 <Home> preset button
- 5 <Care and maintenance> preset button
- 6 <Up>/<down>, <left>/<right> arrow keys
- 7 <OK>/<Save> button

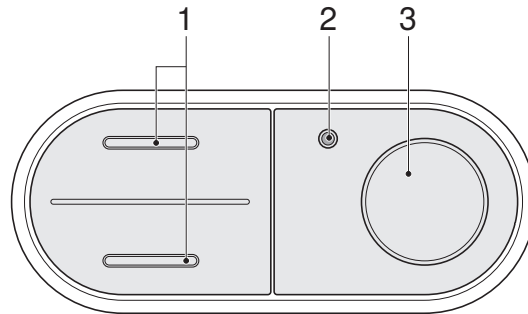
Status LED on the remote control

The LED on the remote control indicates the current device status at the touch of a button.

LED	Description
Flashes blue	<ul style="list-style-type: none">• Pairing is in progress. → See "Re-assigning the remote control", page 64.• The device is initialising. → See "Switching on the device", page 17.
Lights up green briefly	<ul style="list-style-type: none">• Pairing was successful.• User profile was saved successfully.• Factory reset was successful.
Flashes blue-red	<ul style="list-style-type: none">▶ The device must be descaled. → See "Descaling the device", page 56.
Flashes red	<p>A malfunction message is pending.</p> <ul style="list-style-type: none">▶ When a button is pressed on the rear of the remote control, the display/ smartphone shows an [error message] . Follow the instructions on the display. If the LED continues to flash red, contact Geberit customer service.
Flashes orange	<ul style="list-style-type: none">• The device is now descaling. It is not possible to use the shower toilet for the duration of the descaling procedure.• Water replacement is being carried out. → See "Automatic water replacement", page 44.• The device cannot be reached. Shower toilet is switched off or the remote control is > 1 m away.

Lateral control panel

The shower toilet functions of the device can be operated from the lateral control panel on the shower toilet.



- 1 <up>/<down> buttons: decrease or increase spray intensity
- 2 Status LED
- 3 <Shower> button: start or stop anal shower or Lady shower

Status LED on the lateral control panel

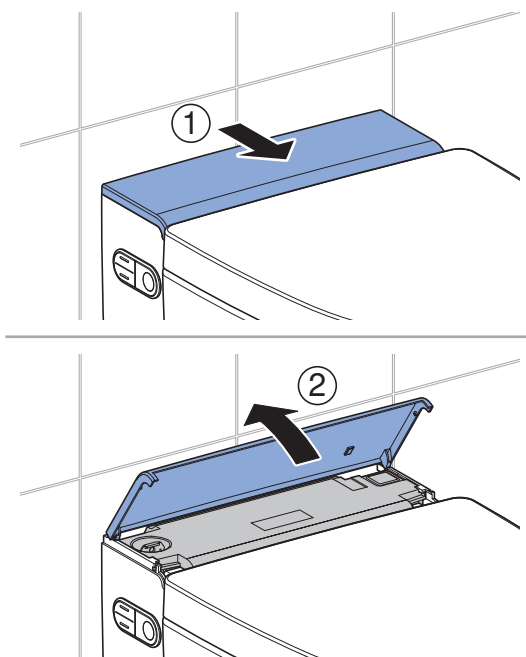
The status LED on the lateral control panel informs you of the current device status. The current condition of the device is therefore visible.

Status LED	Description
Does not light up	Heating element is switched off/economy mode is active.
Lights up blue	The heating element is switched on.
Flashes blue	The device initialises after switching on.
Flashes blue-red	► The device must be descaled. → See "Descaling the device", page 56.
Flashes red	A malfunction message is pending. ► When a button is pressed on the rear of the remote control, the display/ smartphone shows an [error message] . Follow the instructions on the display. If the LED continues to flash red, contact Geberit customer service. ► The ceramic honeycomb filter must be replaced. → See "Replacing the ceramic honeycomb filter", page 65.
Flashes orange	<ul style="list-style-type: none"> • The device is now descaling. It is not possible to use the shower toilet for the duration of the descaling procedure. • Water replacement is being carried out. → See "Automatic water replacement", page 44.

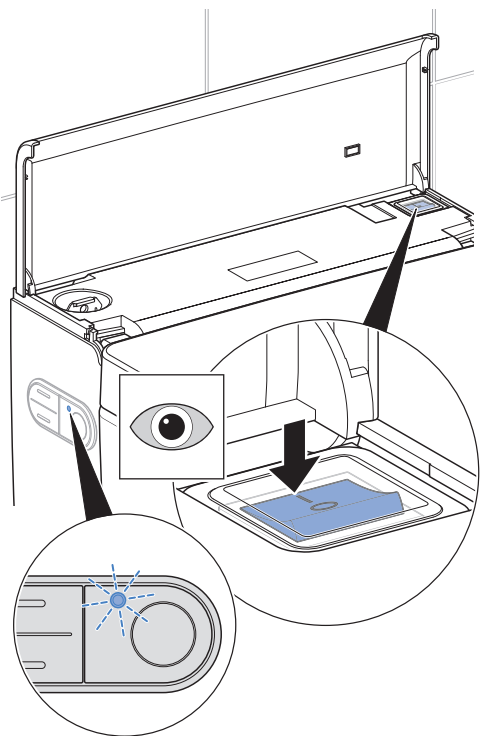
Switching on the device

i Wait at least 30 seconds between the switch-off and switch-on procedures.

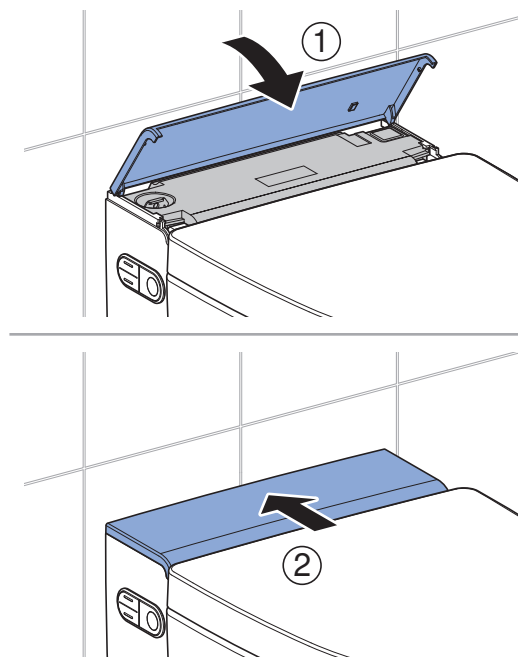
1 Open the design cover.



2 Turn on the power switch to start initialisation.
✓ The blue status LED flashes during initialisation.



3 Close the design cover.



Result

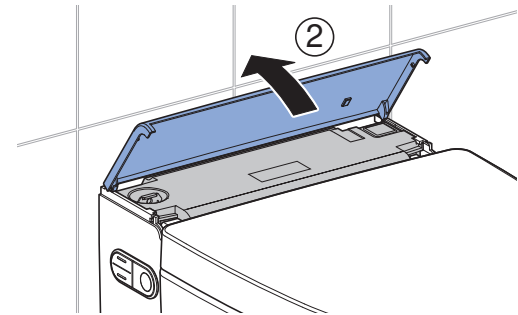
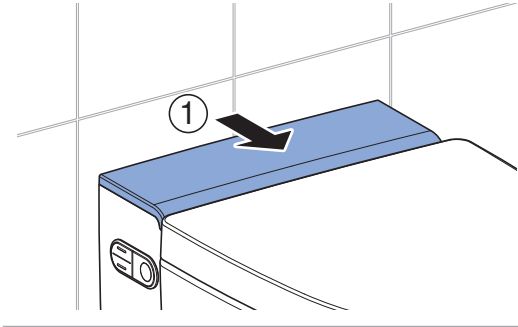
✓ When the blue status LED goes out, initialisation is complete.

Switching off the device

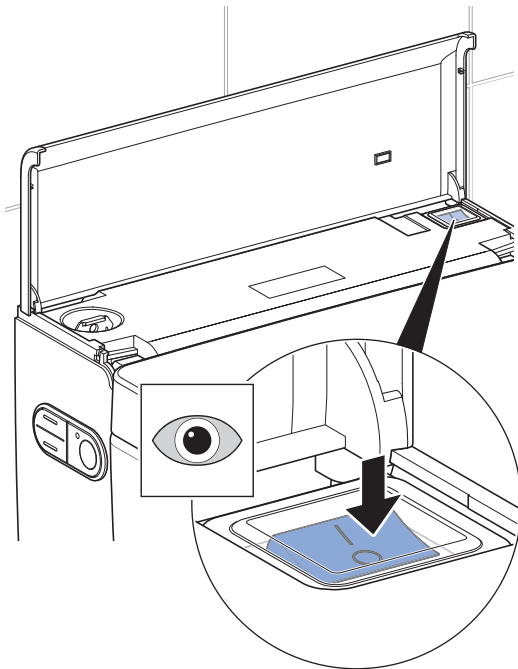
i Wait at least 30 seconds between the switch-off and switch-on procedures.

1 Close the WC lid.

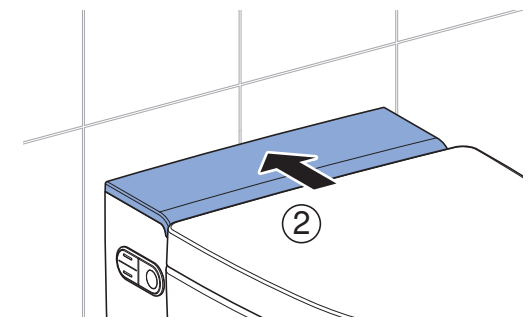
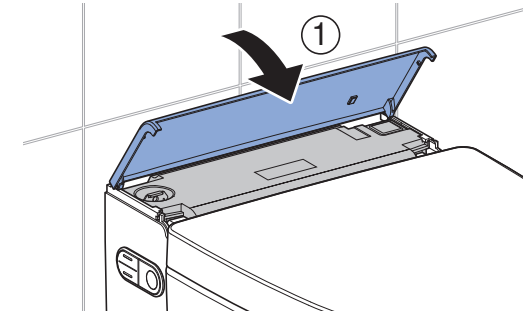
2 Open the design cover.



3 Press the power switch.



4 Close the design cover.



Geberit App

Checking compatibility

To ensure you can use the Geberit App to its full extent, you will need a smartphone with an up-to-date Android or iOS version. You may need to check the permissions (Bluetooth®, location sharing) and confirm them.

Downloading the Geberit Home app

Download the Geberit Home app free of charge from the respective App-Store:

- 1** Open the App-Store on your smartphone.
- 2** Enter 'Geberit Home' in the search field.
✓ The Geberit Home app is displayed.



- 3** Download the app.
✓ The app is downloaded and displayed on your smartphone.

Alternatively, you can scan the respective QR code to download the Geberit Home app:

[Android:](#)



[iOS:](#)



Using the Geberit Home App

The Geberit Home app communicates via a Bluetooth® interface with the Geberit AquaClean shower toilet.



The remote control function of the Geberit AquaClean shower toilet is deactivated while the shower toilet is connected to the Geberit Home App.



Please note that your device may not offer remote control or individual functions may not be available. The functions and settings in the Geberit Home app vary depending on the device and region and are marked with (optional) where appropriate.

You can execute the following functions and settings via the Geberit Home app:

- Remote control
 - Use remote control functions
 - Adjust and save personal settings (optional)
- Device settings
 - Adjust and save basic settings
- Geberit customer service (optional)
 - Contact Geberit customer service
 - Make use of Geberit AquaClean remote maintenance
- Geberit services (optional)
 - Register the device
 - Extend warranty services
- Software update
 - Update the firmware
- Step-by-step instructions
 - Clean the spray nozzle and dryer arm (optional)
 - Carry out descaling
 - Replace the ceramic honeycomb filter (optional)

You can access the following information via the Geberit Home app:

- Explanatory films (optional)
 - Play function videos
 - Play maintenance and cleaning videos
- Troubleshooting
 - Display error messages
- User manual
 - Display the user manual

How to use the device

Getting started

When using the device, the following functions should take place:

When you sit down on the WC seat ring,

- the odour extraction unit starts.
- the water heating starts.
- the device enables the spray functionality.
- the basic settings are activated.

When you start the shower procedure,

- the anal shower procedure will run for 50 seconds or the Lady shower will run for 30 seconds.
- the shower procedure can be interrupted at any time.
- the shower procedure can be adapted to your personal requirements.
- you can change the basic settings and adapt these to your personal requirements.
- barrier-free mode can be activated and deactivated at any time.

When you get up from the WC seat ring,

- the spray functionality deactivates.
- the dryer functionality deactivates.
- the spray nozzle and Lady shower nozzle are rinsed thoroughly.
- the flush is released automatically when flush actuation is switched on.
- the device is set to economy mode.

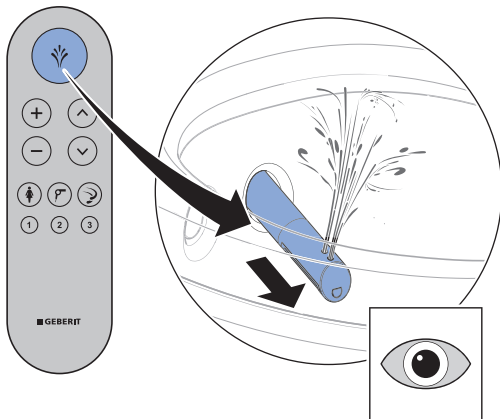
Using the anal shower

- i** User recognition is deactivated while barrier-free mode is activated. → See **Activating barrier-free mode**. The shower procedure can be actuated at any time – even if no one is sitting down on the WC seat ring.

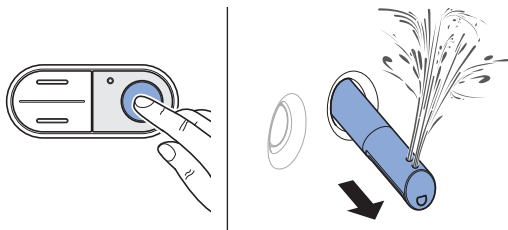
Prerequisite

- You are sitting down on the WC seat ring.

- 1** Press the <Shower> button on the remote control.



- 2** Or: press the <Shower> button on the lateral control panel.



Result

- ✓ The shower procedure starts with the oscillating motion.

- i** You can stop the shower procedure early by pressing the <Shower> button once again.

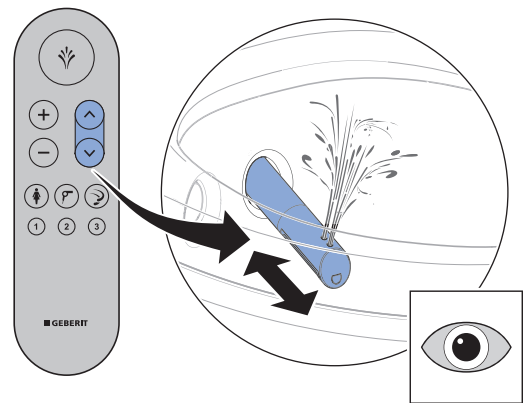
Switching the oscillating motion of the anal shower on and off

- i** The oscillating motion of the spray arm increases the cleaning effect.

Prerequisite

- The shower procedure is running.

- ▶ Press the <up> and <down> arrow keys at the same time to switch the oscillating motion off and on during the shower procedure.



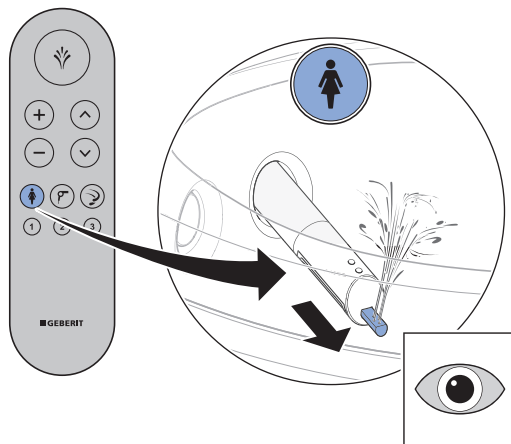
Using the Lady shower

i The woman's intimate area is a very sensitive zone and requires special and prudent care. The Lady shower must be set to your ergonomic conditions to achieve an optimal cleaning result. The position of the spray nozzle and the spray intensity must be selected so that the shower spray cannot penetrate the vagina.

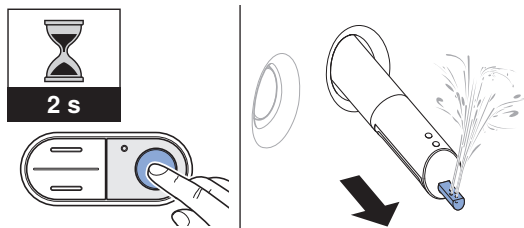
Prerequisite

– You are sitting down on the WC seat ring.

1 Press the <Lady shower> button on the remote control.



2 Or: press the <Shower> button on the lateral control panel for 2 seconds.



Result

✓ The lady shower switches on and the shower procedure starts.

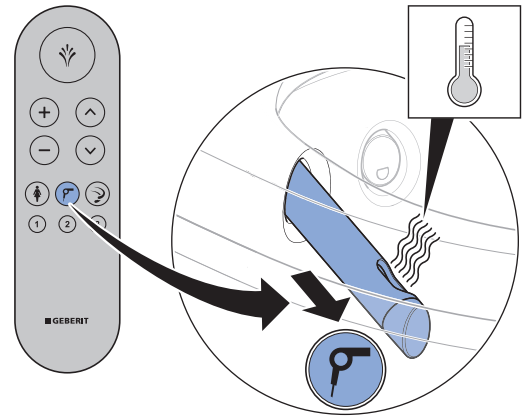
i You can stop the shower procedure early by pressing the <Lady shower> button once again.

Using the dryer

Prerequisite

– You have ended the shower procedure.

▶ Press the <Dryer> button on the remote control.



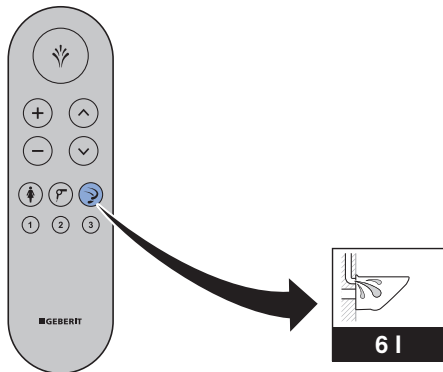
Result

✓ The drying procedure starts.

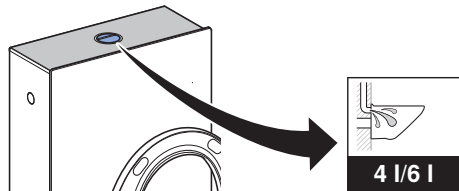
i You can stop the drying procedure early by pressing the <Dryer> button once again.

Releasing the flush

- 1 Press the [Toilet flush] button on the remote control.



- 2 Or: Press the <Flush button> on the casing.

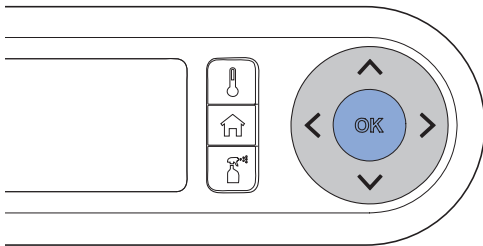
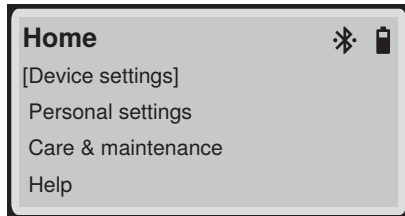


Result

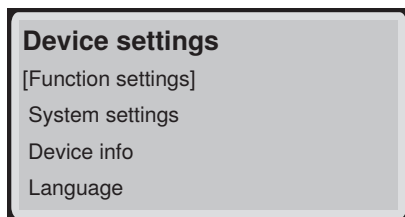
- ✓ The flush actuates.

Activating automatic flush actuation

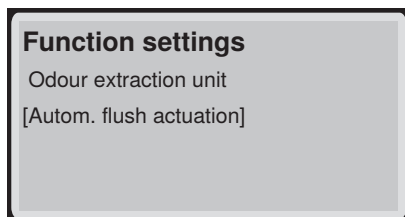
- 1 Call up the [Device settings] main menu using the <Home> button on the back of the remote control and confirm by pressing <OK>.



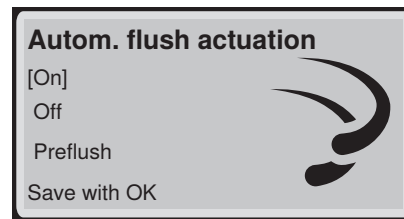
- 2 Use the <down> arrow key to select the [Function settings] menu item and confirm by pressing <OK>.



- 3 Use the <down> arrow key to select the [Auto flush actuation] menu item and confirm by pressing <OK>.



- 4 Use the arrow buttons to select [On] or [Preflush] and save by pressing <OK>.



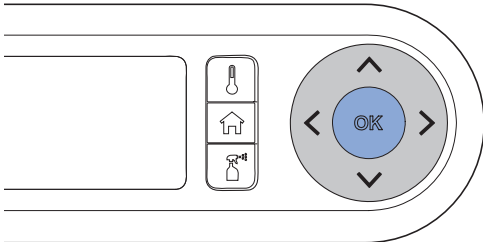
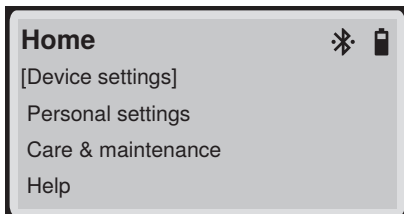
Result

- ✓ Automatic flush actuation is activated.
- ✓ The flush is actuated 3 seconds after the user leaves the user detection zone.

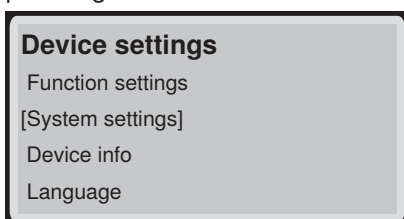
Activate barrier-free mode

i User recognition is deactivated while barrier-free mode is activated. The shower procedure can be actuated at any time – even if no one is sitting down on the WC seat ring.

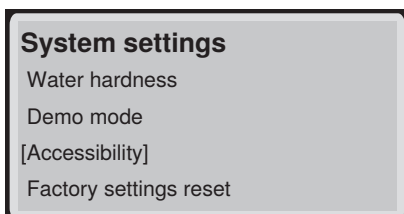
1 Call up the [Device settings] main menu using the <Home> button on the back of the remote control and confirm by pressing <OK>.



2 Use the <down> arrow key to select the [System settings] menu item and confirm by pressing <OK>.



3 Use the <down> arrow key to select the [Barrier-free] menu item and confirm by pressing <OK>.



4 The display shows

Accessibility

Active mode:
User recognition
deactivated!
[Continue with OK]

Confirm by pressing <OK>.

5 Use the <down> arrow key to select the [On] menu item and save by pressing <OK>.

Accessibility

[On]
Off
Save with OK

Result

- ✓ User recognition can be activated by pressing the <Shower> button.
- ✓ The shower procedure can be actuated by pressing the <Shower> button again or on the wall control panel once user recognition has been activated.
- ✓ If the automatic flush actuation is set to [On] or [Preflush], the flush is actuated 3 seconds after the shower/dryer procedure has finished.

Adjusting the shower procedure to your personal needs

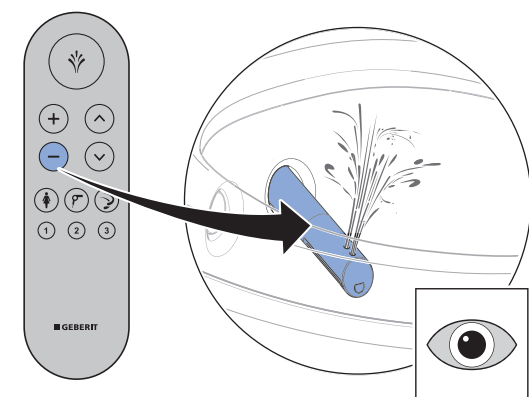
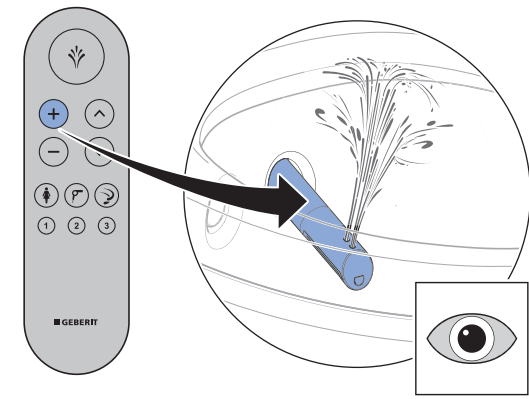
Setting the spray intensity

Prerequisite

- The shower procedure is running.

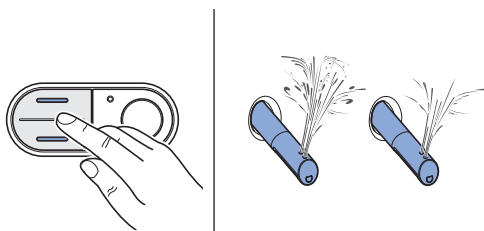
1

Press the <+> button to increase the spray intensity. Press the <-> button to decrease the spray intensity.



2

Or: press the <top> or <bottom> button on the lateral control panel.



Result

- ✓ The shower spray becomes stronger/weaker.



You can set the spray arm position in 5 stages.

Setting the spray arm position



Female users should set the spray arm position of the spray functionality to their ergonomic conditions so that it does not compromise the natural protection of the vaginal area.

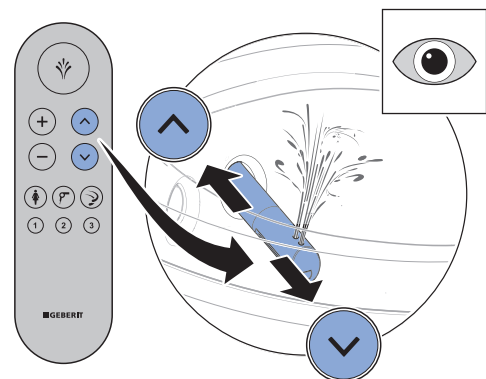
Prerequisite

- The shower procedure is running.



Press the arrow keys on the remote control to position the spray arm.

- ✓ The spray arm moves forwards or backwards.



Result

- ✓ The spray arm is optimally positioned.



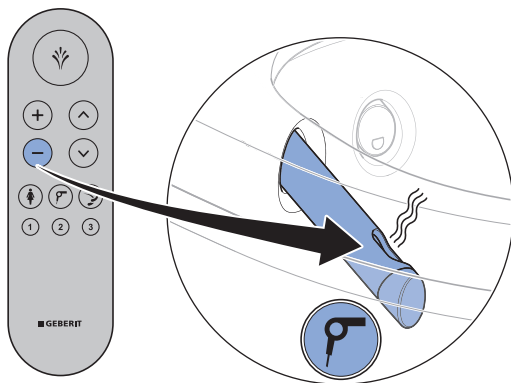
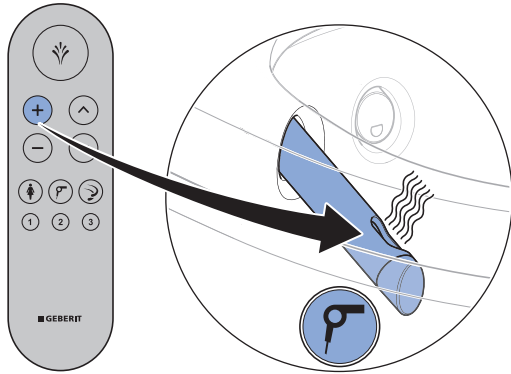
You can set the spray arm position in 5 stages.

Setting the dryer air intensity

Prerequisite

- The drying procedure is running.

- ▶ Press the <+> button to increase the dryer air intensity. Press the <-> button to decrease the dryer air intensity.



Result

- ✓ The dryer air intensity becomes stronger/weaker.

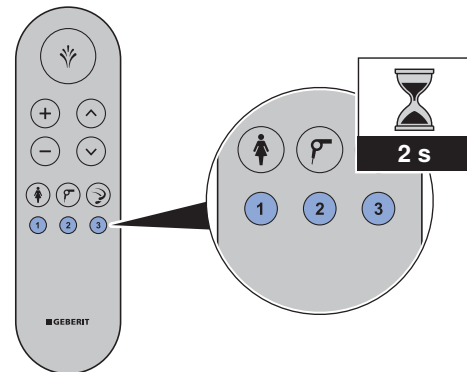
- i** You can set the spray arm position in 5 stages.

Saving user profiles

Three different user profiles can be stored via the <user profile> buttons on the remote control.

- i** User profiles allow you to access your personal settings directly. Select your user profile as soon as you sit down.

- 1 Enter your personal settings.
- 2 Press one of the 3 <user profile> buttons for more than 2 seconds.



Result

- ✓ The LED on the remote control briefly lights up green.
- ✓ The current settings are saved to this button.

- i** The following functions can only be configured from the rear side of the remote control:

- shower water temperature
- warm air temperature
- See "User menu", page 38.

Calling up user profiles

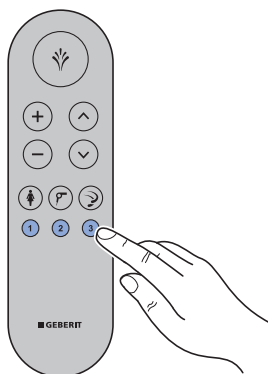


User profiles allow you to access your personal settings directly. Select your user profile as soon as you sit down.

Prerequisite

- Personal user profiles are saved to the <User profile> buttons. → See "Saving user profiles", page 28.

- ▶ Press the <User profile> button on which your personal settings are stored.



Result

- ✓ Your personal user profile is called up and activated.
- ✓ The shower procedure can be started with your personalised settings using the <shower> button.

Saving a personal user profile in the Geberit Home App

Prerequisite

- The current version of the Geberit Home app is installed on your smartphone.
- The Geberit Home app is running.
- You are within the detection range of the shower toilet. User recognition does not have to be activated.

1

Enter your personal settings.

2

Save your settings in the Geberit Home app.

Result

- ✓ Your personal user profile is saved onto your smartphone.
- ✓ The settings apply to all connected shower toilets.

How to program the device

Overview of the programming options

The device settings can be configured using the back of the remote control. Press any button on the rear side of the remote control to activate the display.

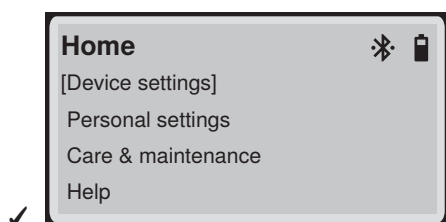
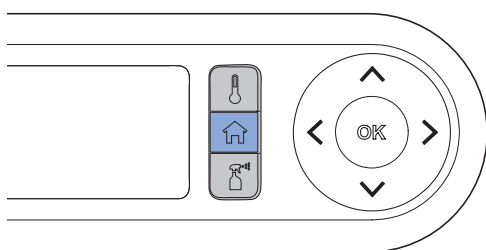
i To save the battery, the display deactivates after 30 seconds. The display rebuilds itself regularly, which is visible by means of a flickering.

The following main menus are available:

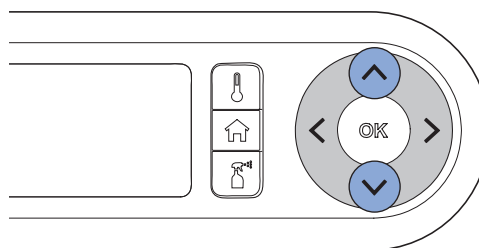
- [Device settings]
- [Personal settings]
- [Care and maintenance]
- [Help]

Device settings main menu

1 Access the [Device settings] main menu using the <Home> button on the back of the remote control.



2 Use the <up>/<down> arrow keys to access the next menu item.



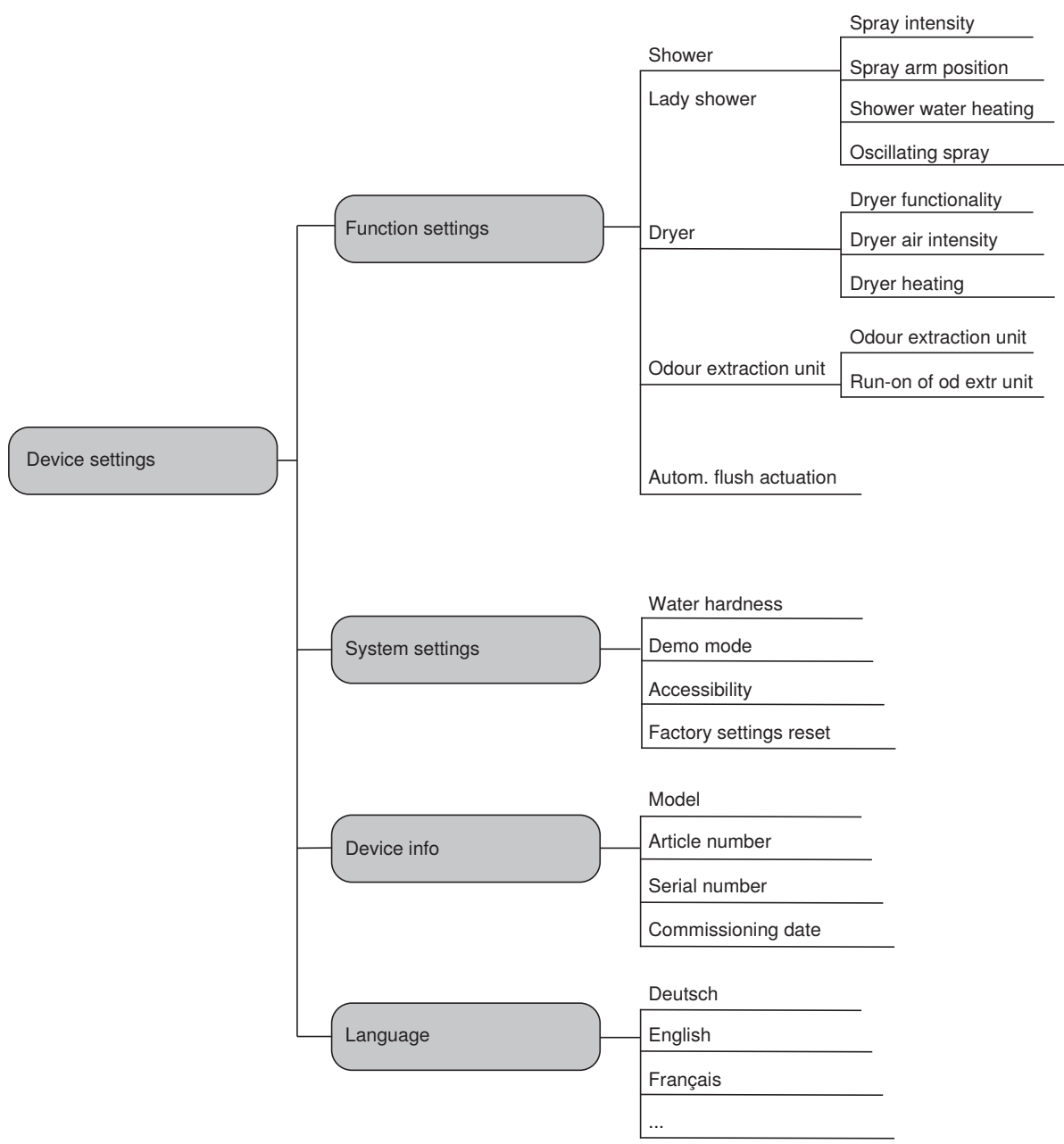
✓ The active menu item is indicated by square brackets.

3 Confirm the menu item using the <OK> button.

4 Configure your settings.

5 Save the settings by pressing the <OK> button.

Device settings menu



Function settings menu

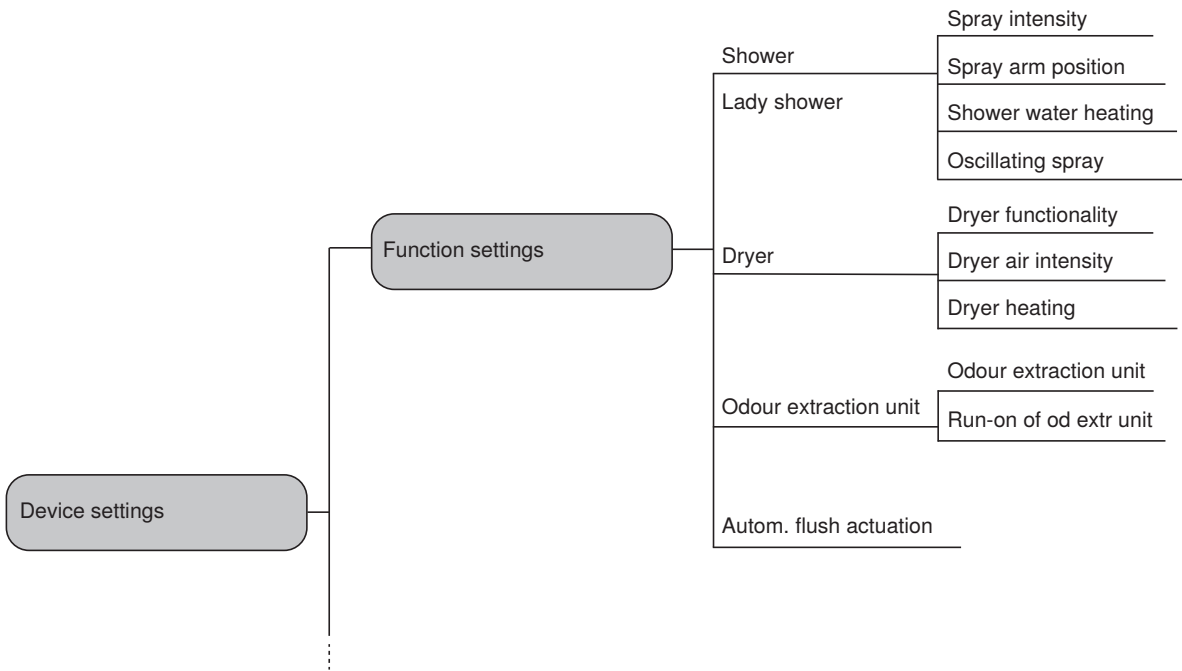


Table 1: Function settings – Shower/Lady shower





Display in the display/menu	Display in the display/submenu	Settings
<div style="border: 1px solid black; padding: 5px;"> <p>Function settings</p> <p>[Shower]</p> <p>Lady shower</p> <p>Dryer</p> <p style="text-align: right;">∨</p> </div>		<p>[Spray intensity] of the anal shower</p> <p>[Spray intensity] of the Lady shower</p>
<div style="border: 1px solid black; padding: 5px;"> <p>Function settings</p> <p>Shower</p> <p>[Lady shower]</p> <p>Dryer</p> <p style="text-align: right;">∨</p> </div>	<div style="border: 1px solid black; padding: 5px;"> <p>Shower</p> <p>[Spray intensity]</p> <p>Spray arm position</p> <p>Shower water heating</p> <p>Oscillating spray</p> </div>	<div style="border: 1px solid black; padding: 5px;"> <p>Spray intensity</p>  <p>[Save with OK]</p> </div>
	<div style="border: 1px solid black; padding: 5px;"> <p>Shower</p> <p>Spray intensity</p> <p>[Spray arm position]</p> <p>Shower water heating</p> <p>Oscillating spray</p> </div>	<p>[Spray arm position] of the anal shower</p> <p>[Spray arm position] of the Lady shower</p> <div style="border: 1px solid black; padding: 5px;"> <p>Spray arm position</p>  <p>[Save with OK]</p> </div>
	<div style="border: 1px solid black; padding: 5px;"> <p>Shower</p> <p>Spray intensity</p> <p>Spray arm position</p> <p>[Shower water heating]</p> <p>Oscillating spray</p> </div>	<p>Shower water temperature</p> <div style="border: 1px solid black; padding: 5px;"> <p>Water temperature</p>  <p>[Save with OK]</p> </div>
	<div style="border: 1px solid black; padding: 5px;"> <p>Shower</p> <p>Spray intensity</p> <p>Spray arm position</p> <p>Shower water heating</p> <p>[Oscillating spray]</p> </div>	<p>[On] = the oscillating motion of the spray arm is activated.</p> <p>[Off] = the oscillating motion of the spray arm is deactivated.</p> <div style="border: 1px solid black; padding: 5px;"> <p>Oscillating spray</p> <p>[On]</p> <p>Off</p> <p>Save with OK</p>  </div>

Table 2: Function settings –Dryer




Display in the display/menu	Display in the display/submenu	Settings
<div data-bbox="150 271 555 483"> <p>Function settings Shower Lady shower [Dryer]</p> <p style="text-align: center;">▼</p> </div>	<div data-bbox="580 443 986 656"> <p>Dryer [Dryer functionality] Dryer air intensity Dryer heating</p> </div>	<p>[On] = the dryer functionality starts automatically after the spray functionality. [Off] = the dryer functionality is deactivated.</p> <div data-bbox="1011 443 1417 656"> <p>Dryer functionality [On] Off</p>  <p>Save with OK</p> </div>
	<div data-bbox="580 723 986 936"> <p>Dryer Dryer functionality [Dryer air intensity] Dryer heating</p> </div>	<p>Strength of the dryer air</p> <div data-bbox="1011 723 1417 936"> <p>Dryer air intensity</p>  <p>[Save with OK]</p> </div>
	<div data-bbox="580 1003 986 1216"> <p>Dryer Dryer functionality Dryer air intensity [Dryer heating]</p> </div>	<p>Temperature of the dryer air</p> <div data-bbox="1011 1003 1417 1216"> <p>Dryer temperature</p>  <p>[Save with OK]</p> </div>

Table 3: Function settings – Odour extraction



Display in the display/menu	Display in the display/submenu	Settings
<div style="border: 1px solid black; padding: 5px;"> <p>Function settings [Odour extraction unit] Autom. flush actuation</p> </div>	<div style="border: 1px solid black; padding: 5px;"> <p>Odour extraction unit [Odour extraction unit] Run-on of od extr unit</p> </div>	<p>[On] = the odour extraction unit starts as soon as a user is detected on the WC. [Off] = the odour extraction unit is deactivated.</p> <div style="border: 1px solid black; padding: 5px;"> <p>Odour extraction unit [On] Off Save with OK</p>  </div>
	<div style="border: 1px solid black; padding: 5px;"> <p>Odour extraction unit Odour extraction unit [Run-on of od extr unit]</p> </div>	<p>[On] = the odour extraction unit continues running for 2 minutes afterwards. [Off] = the odour extraction unit does not continue running afterwards.</p> <div style="border: 1px solid black; padding: 5px;"> <p>Run-on of od extr unit [On] Off Save with OK</p> </div>

Table 4: Function settings – Automatic flush actuation

Display in the display/menu	Display in the display/submenu	Settings
<div style="border: 1px solid black; padding: 5px;"> <p>Function settings Odour extraction unit [Autom. flush actuation]</p> </div>		<p>[On] = the flush actuates automatically once the user has left the user detection zone. [Off] = the automatic flush actuation is deactivated. [Preflush] = the flush actuates after starting the shower and 3 seconds after leaving the user detection zone.</p> <div style="border: 1px solid black; padding: 5px;"> <p>Autom. flush actuation [On] Off Preflush Save with OK</p>  </div>

System settings menu

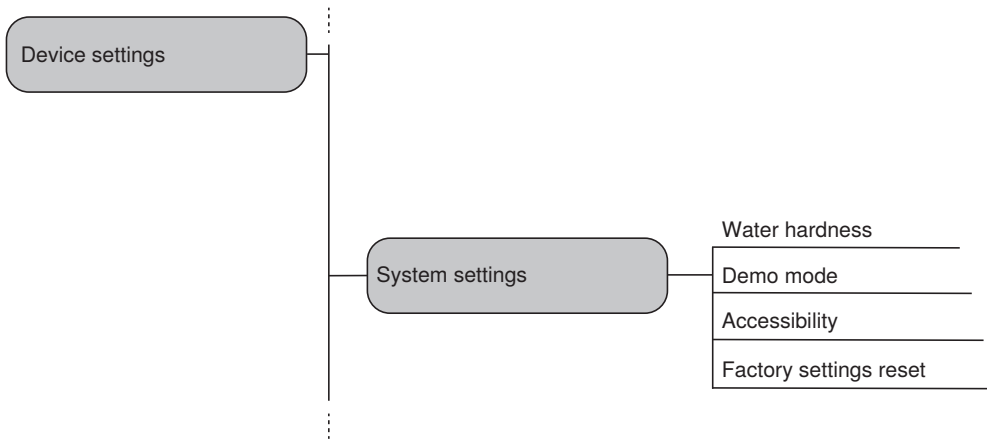


Table 5: System settings – Water hardness

Display in the display/menu	Display in the display/submenu	Settings
System settings [Water hardness] Demo mode Accessibility Factory settings reset	Water hardness [soft] medium hard Continue with OK	Water hardness soft °fH < 15 °dH < 8 °eH < 11 Save with OK
	Water hardness soft [medium] hard Continue with OK	Water hardness medium °fH 15 - 25 °dH 8 - 14 °eH 11 - 18 Save with OK
	Water hardness soft medium [hard] Continue with OK	Water hardness hard °fH > 25 °dH > 14 °eH > 18 Save with OK

Table 6: System settings – Demonstration mode

Display in the display/menu	Display in the display/submenu	Settings
<div style="border: 1px solid black; padding: 5px;"> <p>System settings</p> <p>Water hardness</p> <p>[Demo mode]</p> <p>Accessibility</p> <p>Factory settings reset</p> </div>		<p>[On] = Demonstration mode is activated.</p> <p>[Off] = Demonstration mode is deactivated.</p> <div style="border: 1px solid black; padding: 5px;"> <p>Demo mode</p> <p>[On]</p> <p>Off</p> <p>Save with OK</p> </div>

Table 7: System settings – Accessibility

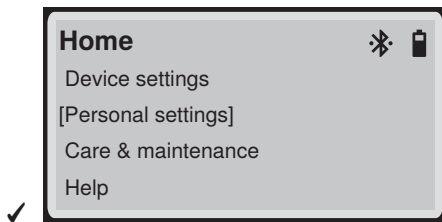
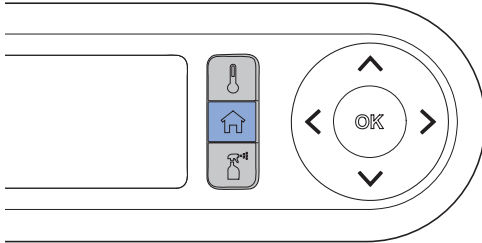
Display in the display/menu	Display in the display/submenu	Settings
<div style="border: 1px solid black; padding: 5px;"> <p>System settings</p> <p>Water hardness</p> <p>Demo mode</p> <p>[Accessibility]</p> <p>Factory settings reset</p> </div>	<div style="border: 1px solid black; padding: 5px;"> <p>Accessibility</p> <p>Active mode:</p> <p>User recognition deactivated!</p> <p>[Continue with OK]</p> </div>	<p>[On] = Barrier-free mode is activated.</p> <p>[Off] = Barrier-free mode is deactivated.</p> <div style="border: 1px solid black; padding: 5px;"> <p>Accessibility</p> <p>[On]</p> <p>Off</p> <p>Save with OK</p> </div>

Table 8: System settings – Factory settings

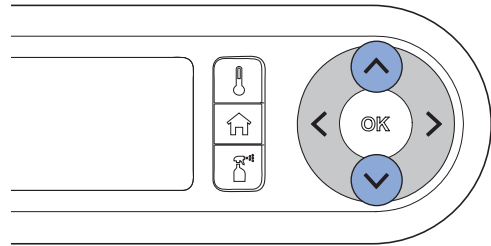
Display in the display/menu	Display in the display/submenu	Settings
<div style="border: 1px solid black; padding: 5px;"> <p>System settings</p> <p>Water hardness</p> <p>Demo mode</p> <p>Accessibility</p> <p>[Factory settings reset]</p> </div>	<p>The language is not reset when resetting to factory settings.</p> <div style="border: 1px solid black; padding: 5px;"> <p>Factory settings reset</p> <p>Reset the device to factory settings now?</p> <p>[Continue with OK]</p> </div>	<p>[Yes] = the factory setting is applied.</p> <p>[No] = the factory setting is not applied.</p> <div style="border: 1px solid black; padding: 5px;"> <p>Factory settings reset</p> <p>[Yes]</p> <p>No</p> <p>Save with OK</p> </div>

Personal settings main menu

- 1 Access the [Personal settings] main menu using the <Home> button on the back of the remote control.



- 2 Use the <up>/<down> arrow keys to access the next menu item.



- ✓ The active menu item is indicated by square brackets.

- 3 Confirm the menu item using the <OK> button.

- 4 Configure your settings.

- 5 Save the settings by pressing the <OK> button.

User menu

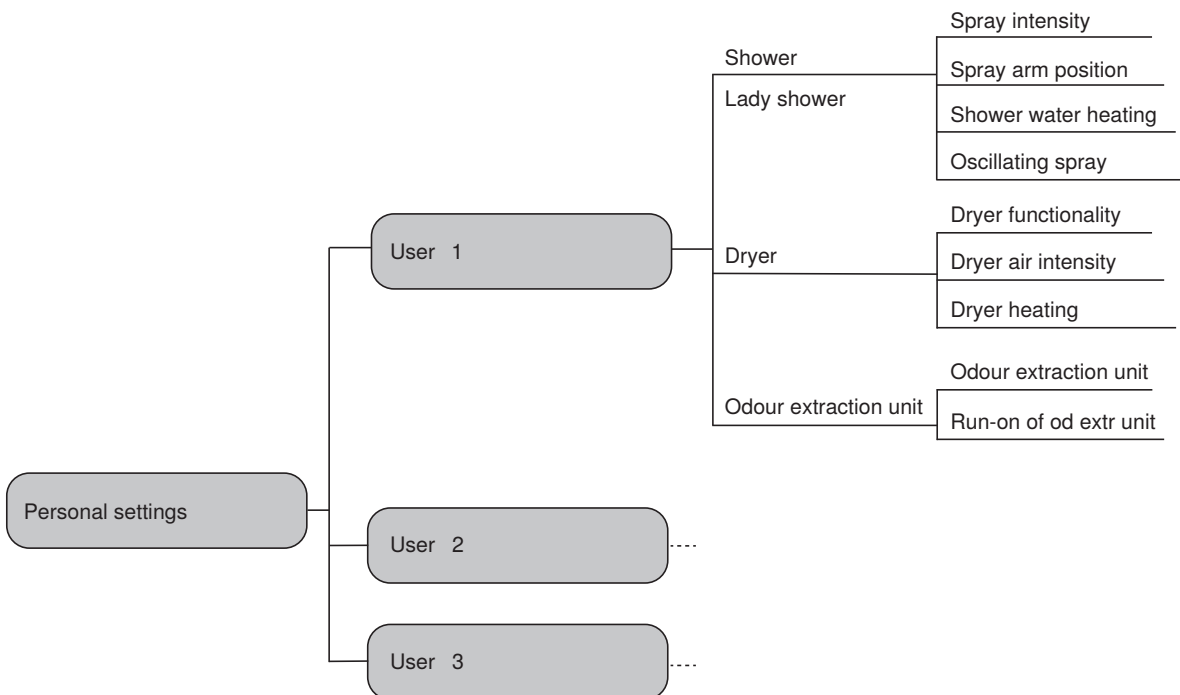
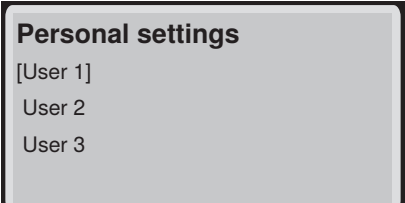
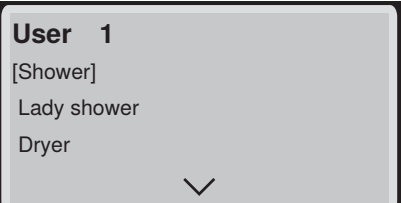
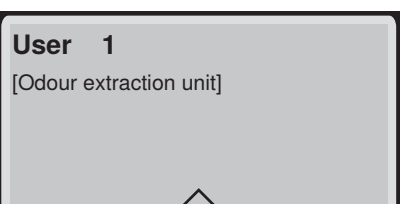
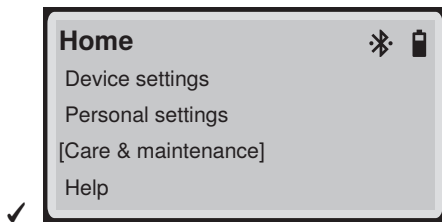
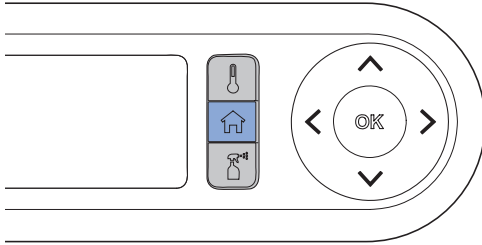


Table 9: Personal settings – User

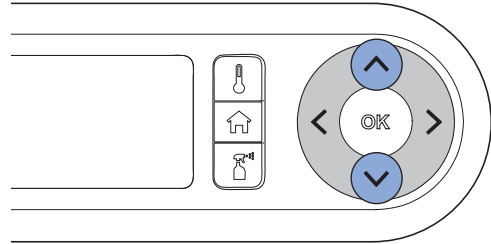
Display in the display/menu	Display in the display/submenu	Settings
 <p>Personal settings [User 1] User 2 User 3</p>	 <p>User 1 [Shower] Lady shower Dryer</p>	<p>→ See "Function settings menu", page 32.</p>
	 <p>User 1 [Odour extraction unit]</p>	

Care and maintenance main menu

- 1 Access the [Care and maintenance] main menu using the <Home> button on the back of the remote control.



- 2 Use the <up>/<down> arrow keys to access the next menu item.



- ✓ The active menu item is indicated by square brackets.

- 3 Confirm the menu item using the <OK> button.

- 4 Configure your settings.

- 5 Save the settings by pressing the <OK> button.

Care and maintenance menu

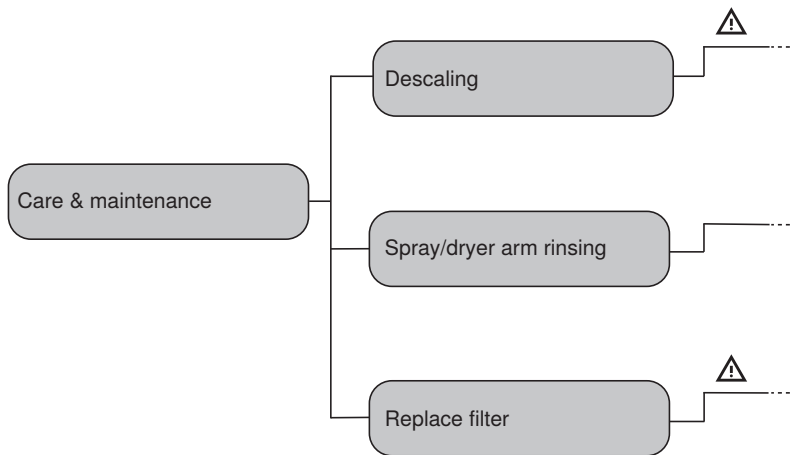


Table 10: Care and maintenance – Descaling



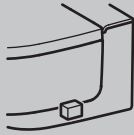
Display in the display/menu	Display in the display/submenu	Settings
<div style="border: 1px solid black; padding: 5px;"> <p>Care & maintenance</p> <p>[Descaling] </p> <p>Spray/dryer arm rinsing</p> <p>Replace filter</p> </div>	<div style="border: 1px solid black; padding: 5px;"> <p>Descaling</p> <p>WC due for descaling</p> <p>Duration approx. 60 min</p> <p>[Start with OK]</p> <p>Cancel</p> </div>	<p>→ See "Descaling the device", page 56.</p>
<div style="border: 1px solid black; padding: 5px;"> <p>Care & maintenance</p> <p>[Descaling]</p> <p>Spray/dryer arm rinsing</p> <p>Replace filter</p> </div>	<div style="border: 1px solid black; padding: 5px;"> <p>Care & maintenance</p> <p>Next descaling in</p> <p>ddd</p> <p>days</p> <p>[Continue with OK]</p> </div>	

Table 11: Care and maintenance – Cleaning shower/dryer arm

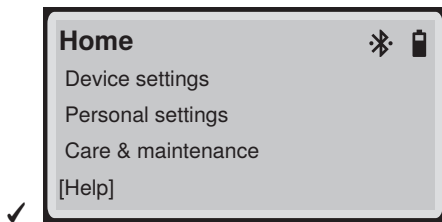
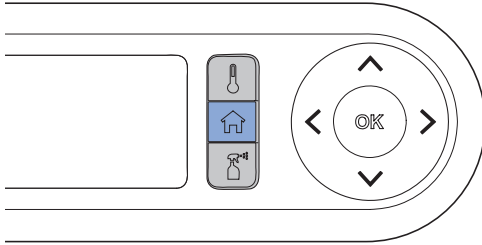
Display in the display/menu	Display in the display/submenu	Settings
<div style="border: 1px solid black; padding: 5px;"> <p>Care & maintenance</p> <p>Descaling</p> <p>[Spray/dryer arm rinsing]</p> <p>Replace filter</p> </div>		<p>→ See "Cleaning the shower and dryer arm via the side control panel or buttons on the remote control", page 54.</p> <p>→ See "Cleaning shower and dryer arm via remote control display", page 51.</p>

Table 12: Care and maintenance – Replacing filters

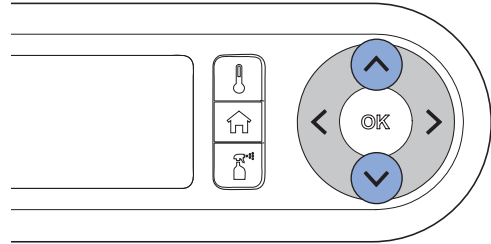
Display in the display/menu	Display in the display/submenu	Settings
<div style="border: 1px solid black; padding: 5px;"> <p>Care & maintenance</p> <p>Descaling</p> <p>Spray/dryer arm rinsing</p> <p>[Replace the filter] </p> </div>	<div style="border: 1px solid black; padding: 5px;"> <p>Replace filter 1/3</p> <p>Replace the old filter</p>  <p>[Cont. with OK]</p> </div>	<p>→ See "Replacing the ceramic honeycomb filter", page 65.</p>
<div style="border: 1px solid black; padding: 5px;"> <p>Care & maintenance</p> <p>Descaling</p> <p>Spray/dryer arm rinsing</p> <p>[Replace the filter]</p> </div>	<div style="border: 1px solid black; padding: 5px;"> <p>Replace filter</p> <p>Next filter replacement:</p> <p>ddd</p> <p>days</p> <p>[Cont. with OK]</p> </div>	

Help main menu

- 1 Access the [Help] main menu using the <Home> button on the back of the remote control.



- 2 Use the <up>/<down> arrow keys to access the next menu item.



- ✓ The active menu item is indicated by square brackets.

- 3 Confirm the menu item using the <OK> button.

- 4 Configure your settings.

- 5 Save the settings by pressing the <OK> button.

Help menu

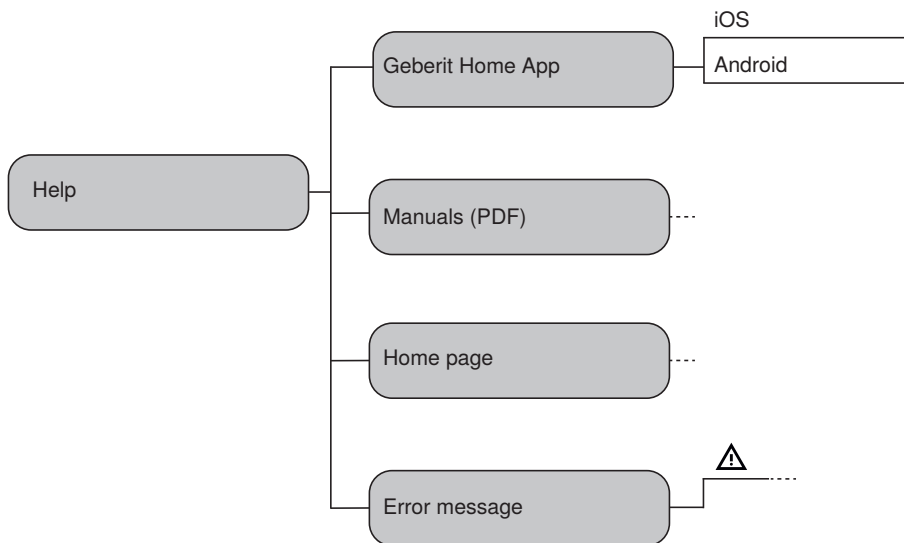


Table 13: Help – Geberit Home app

Display in the display / menu	Display in the display / submenu	Setting
<p>Help</p> <p>[Geberit Home App]</p> <p>Manuals (PDF)</p> <p>Home page</p> <p>Error message</p>	<p>Geberit Home App</p> <p>[iOS]</p> <p>Android</p> <p>Continue with OK</p>	<p>→ See "Downloading the Geberit Home app", page 19</p>

Table 14: Help – Instructions




Display in the display / menu	Display in the display / submenu	Setting
<p>Help</p> <p>Geberit Home App</p> <p>[Manuals (PDF)]</p> <p>Home page</p> <p>Error message</p>	<p>Manuals (PDF)</p> <p>All manuals available on the home page</p> 	<p>→ See Homepage</p>

Table 15: Help – Home page

Display in the display / menu	Display in the display / submenu	Setting
<p>Help</p> <p>Geberit Home App</p> <p>Manuals (PDF)</p> <p>[Home page]</p> <p>Error message</p>	<p>Home page</p> <p>For more info on our products, please visit: geberit-aquaclean.com</p> 	<p>→ See Homepage</p>

Table 16: Help – Error message

Display in the display / menu	Display in the display / submenu	Setting
<p>Help</p> <p>Geberit Home App</p> <p>Manuals (PDF)</p> <p>Home page</p> <p>[Error message] </p>	<p>Error message</p> <p>Perform restart</p> <p>If error occurs again, call Geberit customer service</p>	
	<p>Error message</p> <p>xxxxxx</p> <p>Contact your Geberit customer service</p> 	<p>→ See Homepage</p>

Cleaning and descaling the device

Care Instructions

You have selected a product with a high-grade surface. Please follow the care instructions below.

The manufacturer does not assume any liability for product damage that arises as a result of incorrect care and handling.

General cleaning recommendations

Cleaning the shower toilet at the recommended cleaning intervals will ensure that it functions properly. The shower toilet must only be cleaned using suitable cleaning agents and cleaning equipment. → See "Suitable cleaning agents and cleaning equipment", page 45.

Cleaning interval	Cleaning activity
Daily	<ul style="list-style-type: none">▶ Remove water drops with a soft, lint-free cloth to avoid limescale stains.
Weekly	<ul style="list-style-type: none">▶ Clean the WC ceramic appliance with Geberit AquaClean cleaning agent. → See "Care instructions for sanitary ceramic appliances", page 47.▶ Clean all surfaces and corners thoroughly. → See "Cleaning the WC lid and housing", page 50.▶ Test spray nozzle and clean if required. → See "Cleaning the shower and dryer arm via the side control panel or buttons on the remote control", page 54.▶ Rinse the spray nozzle under running water to remove foreign substances.

Automatic water replacement

If the shower toilet has not been used for more than 2 weeks, the device is rinsed with fresh water after it is switched on. This ensures optimum shower water quality before usage.

Targeted disinfection

Disinfection is only required if there is a definite risk of infection as a result of germs. Otherwise, keep to the recommended cleaning intervals and carry out the specified cleaning activities. → See “General cleaning recommendations”.

ATTENTION

Aggressive disinfectants

Disinfection using aggressive disinfectants can cause surface damage.

- ▶ Only use alcohol-based disinfectants that are also suitable for hand and skin disinfection.
- ▶ Observe the safety notes from the manufacturer when handling hazardous substances.

Type of disinfection	Disinfection procedure
Wet wipe disinfection For use on smooth surfaces that can be rubbed	<ul style="list-style-type: none">▶ Moisten all surfaces with disinfectant.▶ Allow the disinfectant to take effect according to the manufacturer information.▶ Then rub the surfaces with single-use towels.

Suitable cleaning agents and cleaning equipment

ATTENTION

Aggressive descaling agents

Unsuitable descaling agents may cause damage to the device.

- ▶ Only use Geberit AquaClean descaling agents to descale the device.
- ▶ Refer to the “Descaling the device” section.

ATTENTION






Aggressive and scouring cleaning agents




Cleaning using aggressive and scouring cleaning agents can cause surface damage.

- ▶ Use Geberit AquaClean cleaning agents.
- ▶ Pay attention to the cleaning and care instructions.

Using the Geberit AquaClean cleaning set is recommended, as this set includes a ready-made cleaning agent that is ideal for cleaning all Geberit AquaClean surfaces.

Recommended properties of suitable cleaning agents and cleaning equipment for best cleaning results:

Symbol	Properties of suitable cleaning agents
	Skin-friendly
	Cleaning agents are permitted to have a low acid content, e.g. diluted citric acid
	Low-foaming
	Liquid
	Water-dilutable

Symbol	Suitable cleaning equipment
	Soft, fine-pored sponges
	Lint-free, soft cloths which are free of dust
	Toilet brush

Care instructions for smooth surfaces

All smooth surfaces can be cleaned hygienically with water and a mild, liquid cleaning agent that is kind to the skin.

i Aggressive and scouring cleaning agents can damage the surface. Only use mild, liquid cleaning agents that are kind to the skin. The Geberit AquaClean cleaning set (art. no. 242.547.00.1) includes a ready-made cleaning agent that is optimal for cleaning all Geberit AquaClean surfaces.

Care instructions for sanitary ceramic appliances

- Use standard cleaning agents only in compliance with the respective manufacturer's information.
- Ensure that the seat of the ceramic appliance or the WC lid is opened or dismantled during the application time of cleaning agents.
- Only use cleaning agents containing chlorine or ones that are abrasive or scouring in the case of heavy deposits.
- Never use sharp or pointed objects when cleaning.

Dirt	Care measures
For daily cleaning	<ul style="list-style-type: none"> ▶ Use mild liquid cleaning agents and water. ▶ Dry the surface with a soft, lint-free cloth.
Stubborn stains	<ul style="list-style-type: none"> ▶ Generally speaking, use cleaning agents suitable for ceramic appliances or a mild scouring liquid. ▶ Remove existing limescale deposits using a mild cleaner containing vinegar. ▶ Clean the surface with water. ▶ Dry the surface with a soft, lint-free cloth.
With heavy deposits	<p>Organic deposits (brown to black in colour):</p> <ul style="list-style-type: none"> ▶ Clean the affected areas with a standard chlorine cleaner. Note the information provided by the cleaning agent manufacturer. The application time of the chlorine cleaner may not exceed 2 h. ▶ Clean the surface with water. ▶ Dry the surface with a soft, lint-free cloth. <p>Silicate deposits (grey in colour):</p> <ul style="list-style-type: none"> ▶ Moisten a microfibre cloth with standard ceramic glass cleaner. ▶ Clean the affected areas with in a circular motion. Silicate deposits are very resistant, which means that several cleaning cycles may be required. ▶ Clean the surface with water. ▶ Dry the surface with a soft, lint-free cloth.

Care instructions for WC seat

Please note the following when cleaning the WC seat:

- Ensure that the WC seat is opened or dismantled during the application time of cleaning agents.
- Never use cleaning agents that contain chlorine or acid or that are corrosive.
- Never use cleaning agents that are abrasive or may scratch the surface.
- Never use sharp or pointed objects when cleaning.
- Use mild liquid cleaning agents and water.
- Use a soft, lint-free cloth.
- Remove any substances containing solvents immediately.

Cleaning the WC seat ring

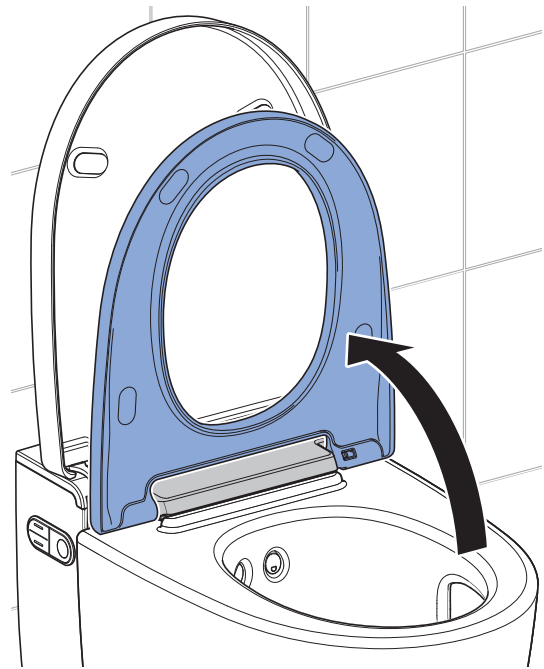
The WC seat ring can be removed easily for simple cleaning.



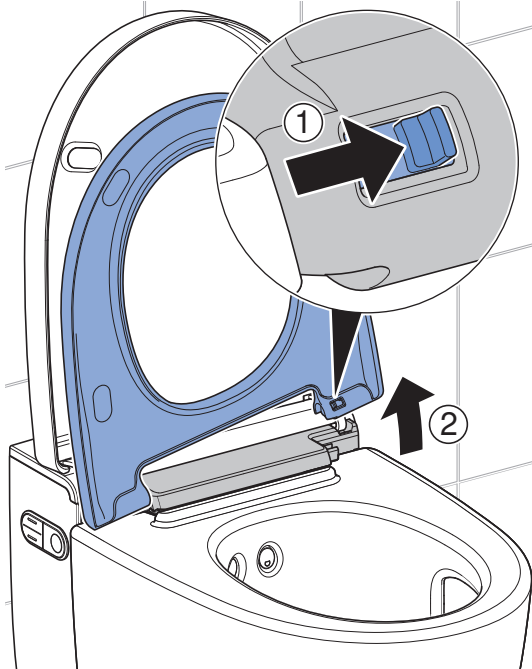
Be careful not to scratch the surface of the WC seat. Always place the components on a soft, non-scratching underlay.

1

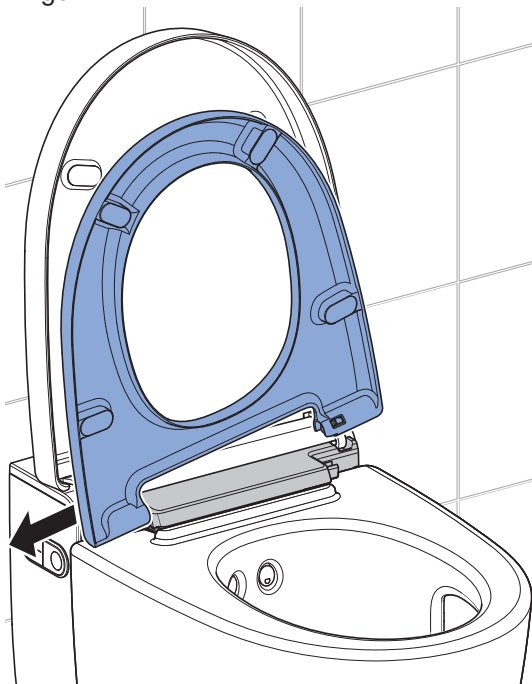
Place the WC seat ring in the vertical position.



- 2** Slide the release button to the right and lift the WC seat ring out of the right-hand bracket.



- 3** Slide the WC seat ring out of the left-hand hinge.



- ✓ The WC seat ring is removed and can be cleaned.

- 4** Spray the surfaces with Geberit AquaClean cleaning agent.

- 5** Wipe the surfaces with a soft, lint-free, damp cloth.

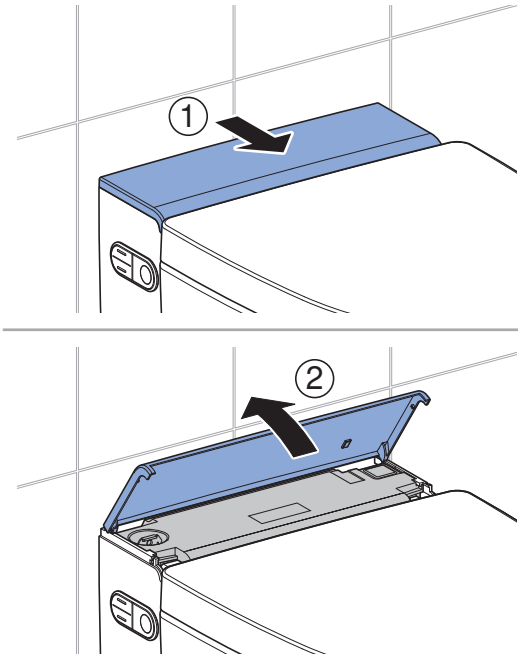
- 6** Then dry the surfaces with a soft, lint-free cloth.

- 7** After cleaning is complete, re-assemble the device in reverse order of disassembly.

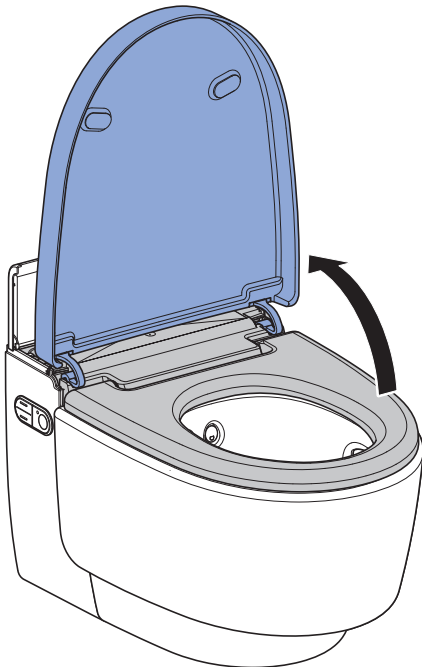
Cleaning the WC lid and housing

i Be careful not to scratch the surface of the WC seat. Always place the components on a soft, non-scratching underlay.

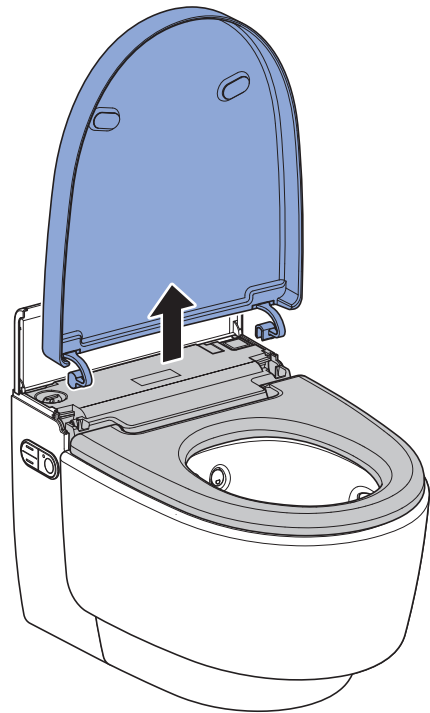
1 Open the design cover.



2 Open the WC lid.



3 Lift the WC lid vertically out of its position.



4 Spray the surfaces with Geberit AquaClean cleaning agent. Wipe the surfaces with a soft, lint-free, damp cloth.

5 Then dry the surfaces with a soft, lint-free cloth.

6 After cleaning is complete, re-assemble the device in reverse order of disassembly.

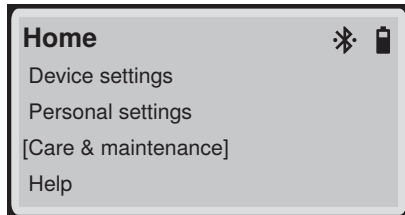
Cleaning shower and dryer arm via remote control display



- For cleaning, use a soft, lint-free cloth.
- Geberit AquaClean cleaning agent is particularly suitable for all surfaces of the device.

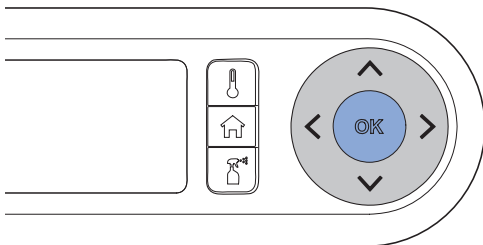
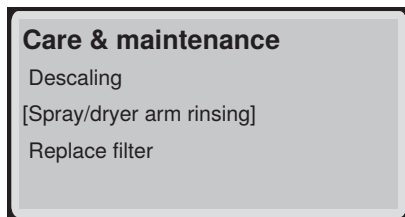
1

Launch the [Care & maintenance] main menu using the buttons on the rear side of the remote control.



2

Use the <down> arrow key to select the [Spray/dryer arm rinsing] menu item and confirm with the <OK> button.

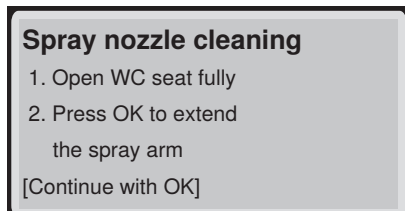


3

Follow the instructions on the remote control display.

4

Lift the WC seat fully.



5

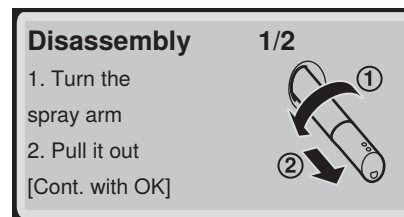
Press the <OK> button to extend the shower arm.

- ✓ The display shows



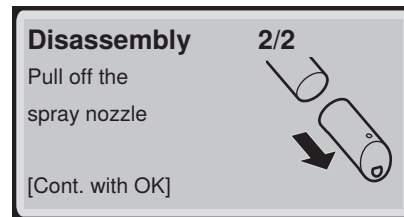
6

Dismantle the shower arm and confirm with the <OK> button.



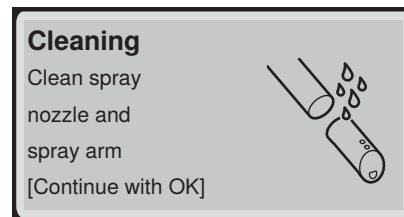
7

Remove the spray nozzle for cleaning and descaling and confirm with the <OK> button.



8

Spray the shower arm and spray nozzle with Geberit AquaClean cleaning agent. Then rinse both parts with water and confirm with the <OK> button.

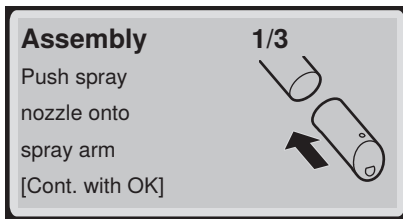


9

Replace the spray nozzle if it can no longer be completely cleaned and descaled.

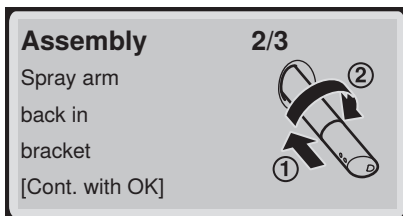
10 Dry the spray nozzle carefully before re-assembling and re-fitting.

11 Attach the spray nozzle to the shower arm and confirm with the <OK> button.

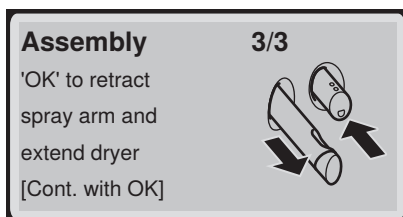


✓ Make sure that the spray nozzle is mounted correctly.

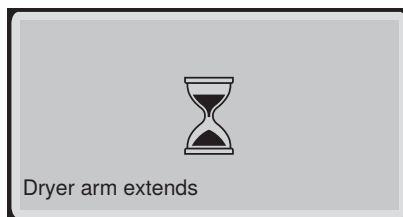
12 Fit the shower arm and confirm with the <OK> button.



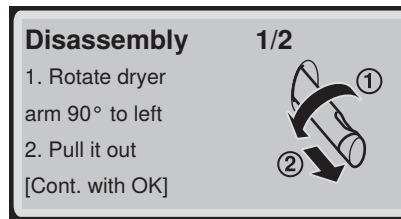
13 Press the <OK> button to retract the shower arm and extend the dryer arm.



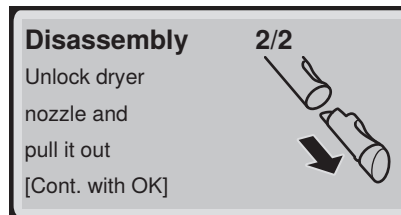
✓ The display shows



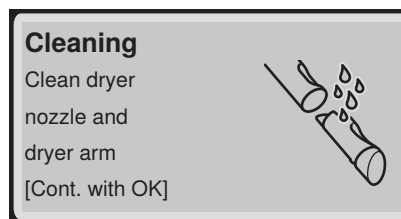
14 Dismantle the dryer arm and confirm with the <OK> button.



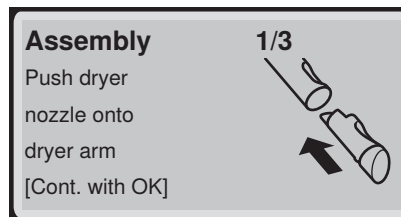
15 Remove the dryer nozzle for cleaning and confirm with the <OK> button.



16 Spray the dryer arm and dryer nozzle with Geberit AquaClean cleaning agent. Then rinse both parts with water and confirm with the <OK> button.



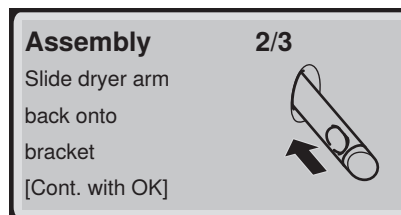
17 Insert the dryer nozzle into the dryer arm.



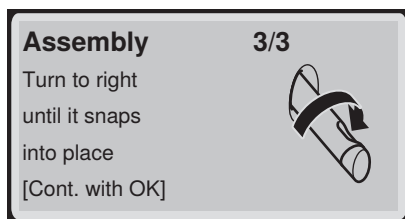
Confirm with the <OK> button.

✓ Make sure that the dryer nozzle is mounted correctly.

18 Slide the dryer arm back onto the holder and confirm with the <OK> button.



-
- 19** Fit the dryer arm and confirm with the <OK> button.



-
- 20** Cleaning is complete. The display shows

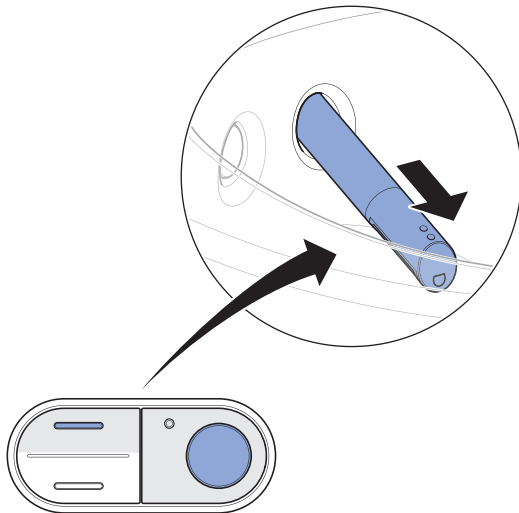


Confirm with the <OK> button.

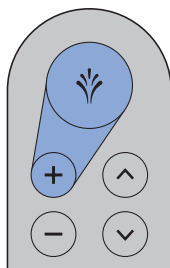
Cleaning the shower and dryer arm via the side control panel or buttons on the remote control

- i** For cleaning, use a soft, lint-free cloth.
- Geberit AquaClean cleaning agent is particularly suitable for all surfaces of the device.

- 1 Open the WC lid.
- 2 Place the WC seat ring in the vertical position.
- 3 Press the <up> button and the <Shower> button on the side control panel at the same time.

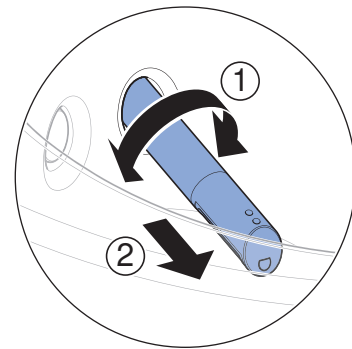


Or: Press the <+> button and the <Shower> button on the remote control at the same time.

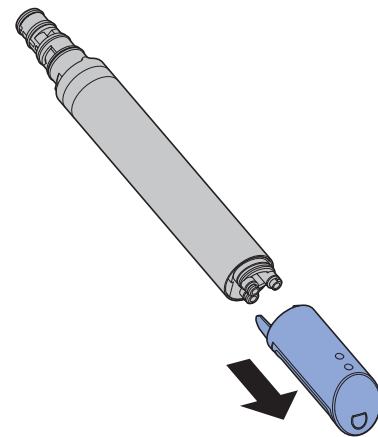


✓ The spray arm extends fully.

- 4 Rotate the spray arm in any direction and remove it.



- 5 Pull out the spray nozzle for cleaning and descaling.

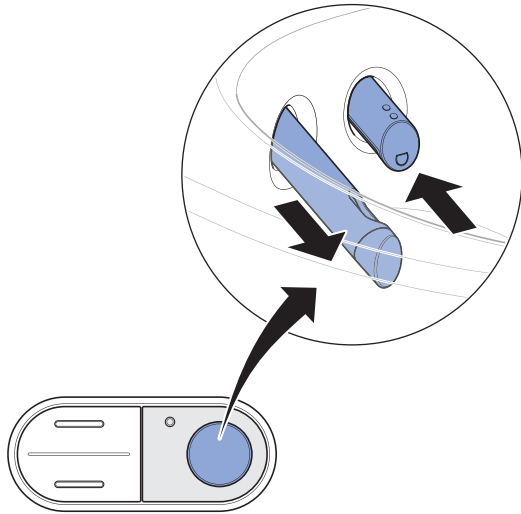


- 6 Replace the spray nozzle if it can no longer be completely cleaned and descaled.

- 7 Spray the spray arm with Geberit AquaClean cleaning agent. Then rinse the spray arm with water.

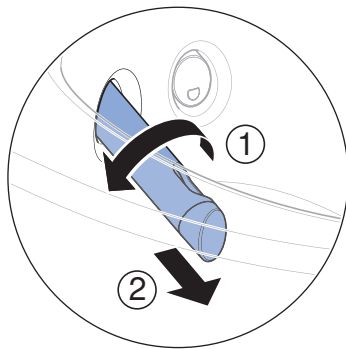
- 8 Dry both parts carefully before re-assembling and re-fitting the spray arm.

- 9** Press the <Shower> button on the side control panel or on the remote control to extend the dryer arm.

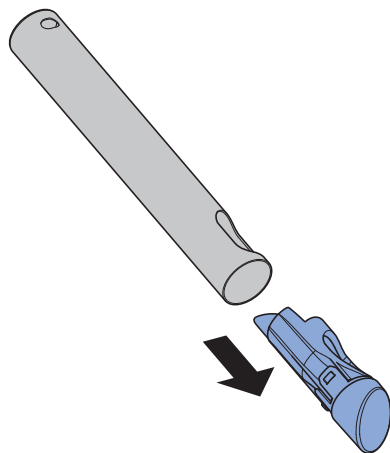


✓ The spray arm retracts and the dryer arm extends.

- 10** Unlock the dryer arm by turning it 90° to the left. Pull the dryer arm out.



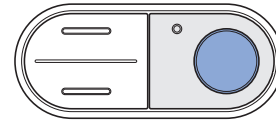
- 11** Press the unlock button on the rear side of the dryer arm and pull out the dryer nozzle.



- 12** Clean the dryer arm and dryer nozzle. Dry both parts carefully before re-assembling the dryer arm.

- 13** Replace the dryer nozzle if it can no longer be completely cleaned.

- 14** Press the <Shower> button on the lateral control panel.



Or: Press the <Shower> button on the remote control.



✓ The dryer arm retracts completely.

Result

✓ The cleaning procedure is now complete.

Descaling the device

Information on descaling:

- During the descaling procedure, you can continue to use the device without the shower toilet functions.
- The descaling procedure lasts up to 60 minutes. During this time, the orientation light flashes orange and you can see the descaling status on the display/smartphone. As soon as the light stops flashing, the spray functionality is ready for operation again.

ATTENTION

Aggressive descaling agents

Unsuitable descaling agents may cause damage to the device.

- ▶ Only use Geberit AquaClean descaling agents to descale the device.
- ▶ Refer to the “Descaling the device” section.



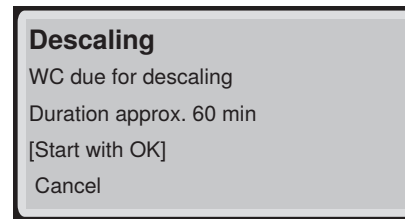
The descaling procedure should not be cancelled after adding the descaling agent because it would otherwise be flushed away unused. The display shows [Descaling agent is being rinsed out].

Prerequisite

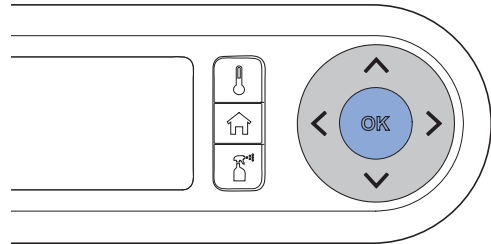
- The status LED on the orientation light flashes blue-red.
- When a button is pressed, the display on the back of the remote control shows [WC due for descaling] or [Device is locked! Descaling must be performed urgently!]
- The spray arm must be fully retracted.
- The WC lid is closed.

1

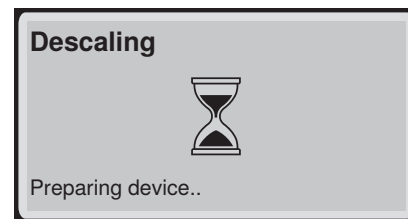
If descaling is due and this is indicated by the status LED, the display shows



Confirm with the <OK> button to start descaling.



- ✓ Wait until the device is ready. The display shows

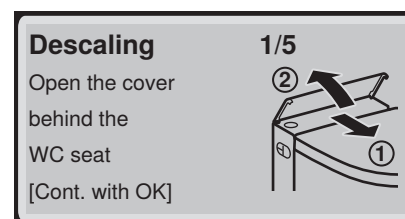


2

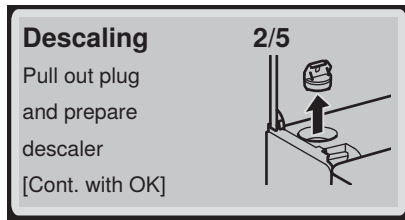
Follow the instructions on the remote control display.

3

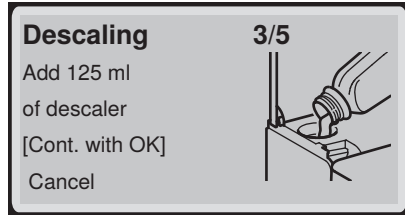
Open the design cover and confirm with the <OK> button.



- 4** Remove the stopper and confirm with the <OK> button.

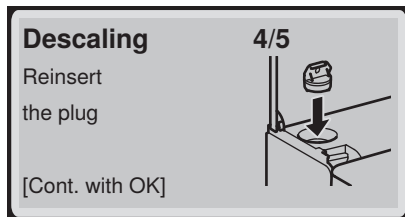


- 5** Pour a bottle (125 ml) of Geberit AquaClean descaling agent into the filling opening

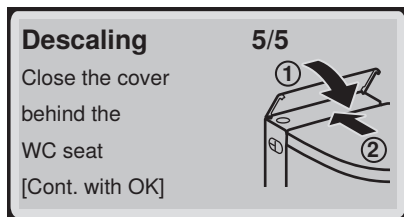


- 6** Confirm with the <OK> button.
✓ The orientation light flashes orange until the descaling procedure is complete.

- 7** Reinsert the stopper and confirm with the <OK> button.



- 8** Remove splashes of descaling agent immediately with a damp cloth.
✓ Wait until the device is ready. The display shows



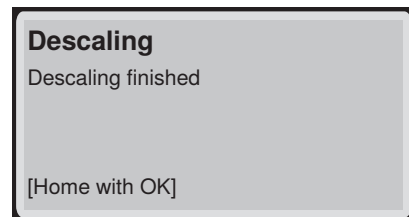
- 9** Close the design cover.

- 10** Use the arrow keys to select the [Continue with OK] menu item and confirm with the <OK> button.

- ✓ A status message appears on the display which shows the duration of the descaling procedure.



- ✓ Wait until the descaling process is complete. The display shows



- ✓ The orientation light no longer flashes orange.

Device descaling message

During installation, the device was configured for the local water hardness in accordance with the following table. This adaptation prevents unnecessary descaling procedures and helps protect the environment. Nevertheless, regular descaling of the device is required.

Area	°fH	°dH	°e
soft	< 15	< 8	< 11
medium	15–25	8–14	11–18
hard	> 25	> 14	> 18

The following table helps you to identify descaling messages and to carry out the necessary fault clearance for each message.

Cause	Message	Fault clearance
Regular descaling: At least once a year	<ul style="list-style-type: none"> The status LED on the lateral control panel and on the orientation light flash blue-red. The display shows [WC due for descaling]. 	<ul style="list-style-type: none"> ▶ Perform descaling. → See "Descaling the device", page 56.
Locked device: Multiple rejected descaling requests	<ul style="list-style-type: none"> The status LED on the lateral control panel and on the orientation light flash blue-red. The display shows [Device is locked! Descaling must be carried out urgently!] 	<p>Prerequisite</p> <ul style="list-style-type: none"> – A shower procedure is no longer possible without descaling. ▶ Perform descaling. → See "Descaling the device", page 56.

Troubleshooting

Troubleshooting

The table below explains what you need to do in the event of a fault:

- Carry out the steps one after the other until the device is no longer demonstrating any faults or is working as normal again.
- Be sure to follow the steps in order.

Step	Description of problem	Fault clearance
1	The shower toilet is demonstrating a fault or is not working as normal.	<ul style="list-style-type: none">▶ Switch off the device. → See "Switching off the device", page 18.▶ Wait 30 seconds.▶ Switch on the device. → See "Switching on the device", page 17.
2	Step 1 has been carried out. The shower toilet continues to demonstrate a fault or still does not work as normal.	<ul style="list-style-type: none">▶ Check the status LED. → See "Status LED on the lateral control panel", page 16. → See "Status LED on the remote control", page 15.
3	Steps 1 and 2 have been carried out. The shower toilet continues to demonstrate a fault or still does not work as normal.	<ul style="list-style-type: none">▶ Check the problem descriptions in the faults table and carry out the relevant fault clearance as required. → See "The shower toilet is without function", page 60 and "Other functional errors", page 61.
4	Steps 1 to 3 have been carried out. The shower toilet continues to demonstrate a fault or still does not work as normal.	<ul style="list-style-type: none">▶ Contact customer service.

The shower toilet is without function

The following table will help you with troubleshooting if the shower toilet is without function.

DANGER

Electric shock

Incorrect maintenance work or troubleshooting can lead to serious injury or death.

- ▶ In case of malfunctions, the device must immediately be switched off at the power switch and the customer service must be contacted.
- ▶ Only trained electrically skilled persons are permitted to perform electrical installations on the device.
- ▶ Only trained professionals are permitted to perform retrofitting on the device.



The shower toilet can be used as a normal toilet even in the event of a malfunction. The spray arm must be fully retracted. You start the toilet flush as usual by pressing the actuator buttons.

Description of problem	Cause	Fault clearance
The fuse or residual-current device in the electrical distributor trips once.	Malfunction has occurred	<ul style="list-style-type: none"> ▶ Replace or reset the fuse in the electrical distributor. ▶ Reset the residual-current device in the electrical distributor. <p>Result</p> <ul style="list-style-type: none"> ✓ The device initialises again after switching on. Using the device does not trip any fuses or residual-current devices.
The fuse or residual-current device in the electrical distributor trips repeatedly when the device is used.	Device defective	<ul style="list-style-type: none"> ▶ Replace or reset the fuse or residual-current device in the electrical distributor. ▶ Disconnect the mains plug (if available). ▶ contact customer service.
The product has an unknown technical defect.	Malfunction has occurred	<ul style="list-style-type: none"> ▶ Trip the fuse or residual-current device in the electrical distributor. ▶ Disconnect the mains plug (if available). ▶ contact customer service. ▶ Have the power supply tested by a skilled person.

Other functional errors

The following table will help you with troubleshooting if individual functions of the shower toilet have failed.



The shower toilet can be used as a normal toilet even in the event of a malfunction. The spray arm and dryer arm must be fully retracted. You start the toilet flush as usual by pressing the buttons on the cistern.



If the device is defective, switch it off using the power switch.

Description of problem	Cause	Fault clearance
The status LED flashes red.	Malfunction described in error message has occurred	▶ Note the number of the error message on the display of the remote control and inform customer service.
Odour neutralisation is weak or ineffective.	Ceramic honeycomb filter dirty	▶ → See "Replacing the ceramic honeycomb filter", page 65.
The spray arm or dryer arm is not functioning correctly.	Malfunction risen	▶ Switch off the shower toilet at the power switch for 30 seconds.
		Result ✓ The device initialises again after switching on.
The cleaning effect of the shower has weakened.	Spray nozzles clogged or defective	▶ Clean or replace the spray nozzles. ▶ → See "Descaling the device", page 56.
When using the shower function, the shower toilet no longer reaches the usual temperature.	Shower toilet dirty	▶ → See "Descaling the device", page 56. ▶ Switch off the shower toilet at the power switch for 30 seconds.
		Result ✓ The device initialises again after switching on.

Troubleshooting for the remote control

The following table will help you with troubleshooting if:

- the remote control is not functioning,
- it is not possible to control the shower toilet with the remote control.



The remote control is inactive while the Geberit Home App is in use.



Should the remote control fail to function, you can use the lateral control panel instead.



If the device is defective, switch it off using the power switch.

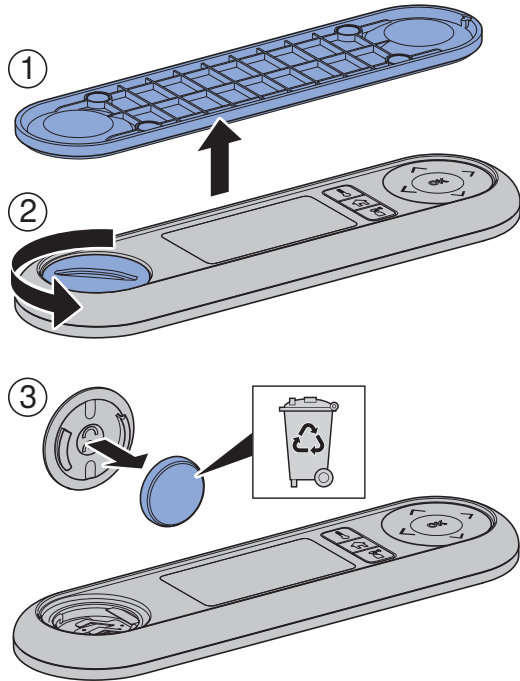
Step	Description of problem	Fault clearance
1	The remote control display shows [device not connected] when buttons are pressed.	<p>► Reassign the remote control. → See "Re-assigning the remote control", page 64</p> <hr/> <p>Result ✓ The display shows [connection established].</p>
2	The remote control display shows [no signal] when buttons are pressed.	<p>► Wait 5 seconds and press the <Home> button again.</p>
3	It is not possible to control the shower toilet with the remote control. The remote control has been re-assigned.	<p>► Replace the battery (type CR2032). → See "Replacing the remote control battery", page 63.</p> <p>► Reassign the remote control. → See "Re-assigning the remote control", page 64.</p>
4	The battery has been replaced and the remote control has been re-assigned; The remote control display still remains unresponsive when buttons are pushed.	<p>► Contact customer service.</p> <hr/> <p>Result ✓ The remote control is defective.</p>
5	The remote control display is set to a language that cannot be read.	<p>► Reset remote control to factory settings. Press the <Home> and <Care and maintenance> presets simultaneously for 5 seconds.</p> <p>► Reassign the remote control. → See "Re-assigning the remote control", page 64.</p>

Replacing the remote control battery

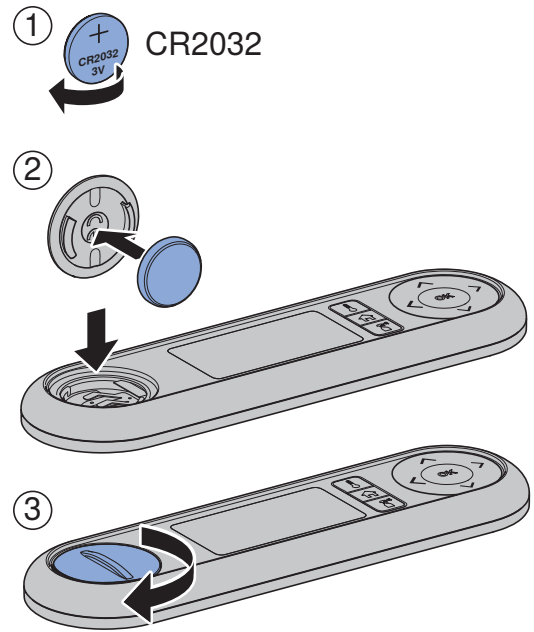
Prerequisite

- During the entire procedure, the remote control must be located in the reception range of the shower toilet.

1 Remove the dead batteries. Dispose of the dead batteries in the correct way.

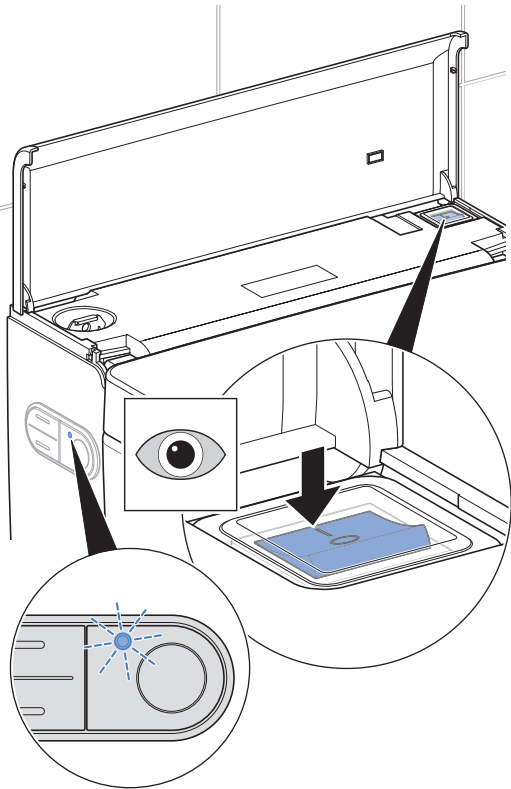


2 Insert a new CR2032 battery.

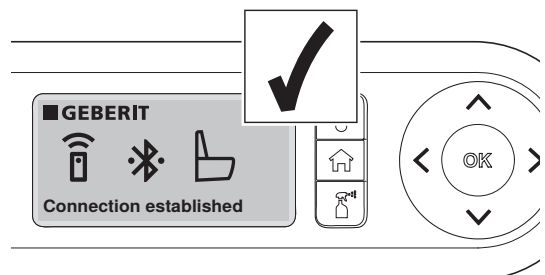
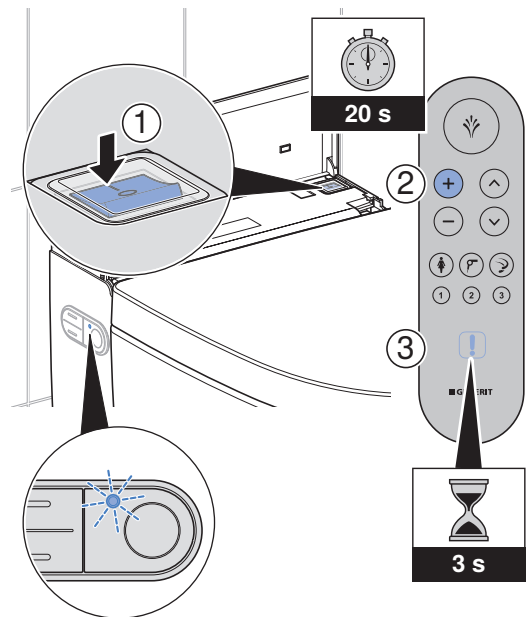


Re-assigning the remote control

- 1 Switch on the device.



- 2 Press the <+> button on the remote control for approx. 20 seconds until [Connection established] appears on the display.



Replacing the ceramic honeycomb filter

CAUTION

Possible health hazard

Impurities in the filter could lead to contamination of the breathing air.

- ▶ Replace the filter annually.



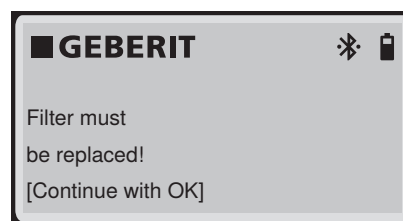
The ceramic honeycomb filter is located on the bottom right side of the device. It is fastened with a catch spring.

Prerequisite

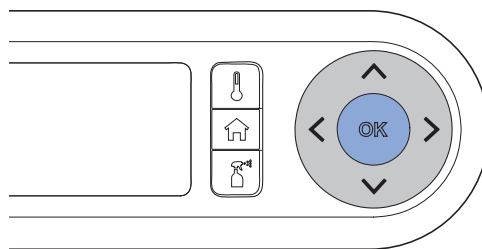
- The status LED on the control panel flashes red.
- At the push of a button, the display on the rear of the remote control shows [Replace filter].

1

If the filter needs to be replaced, the display shows

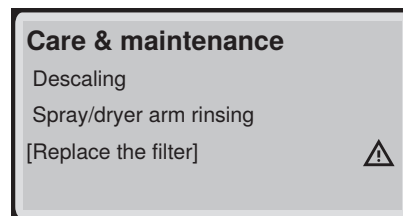


Confirm by pressing <OK>.



2

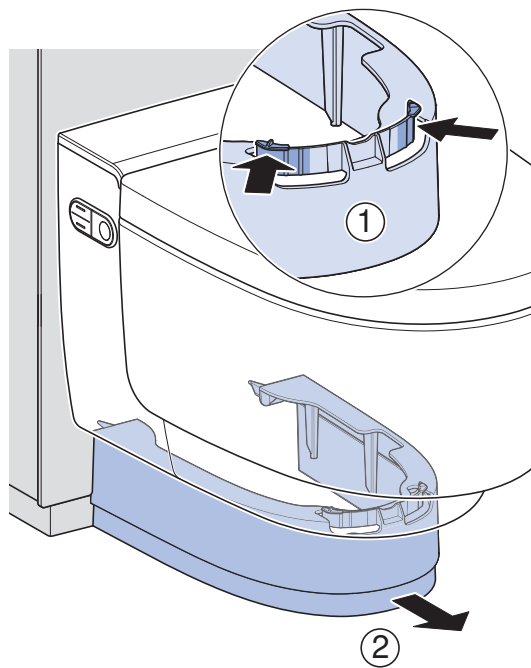
The display shows



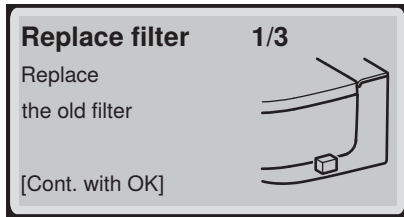
Confirm by pressing <OK>.

3

Remove the lower panel.

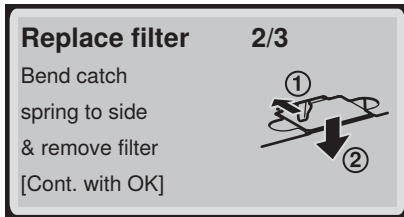


4 The display shows



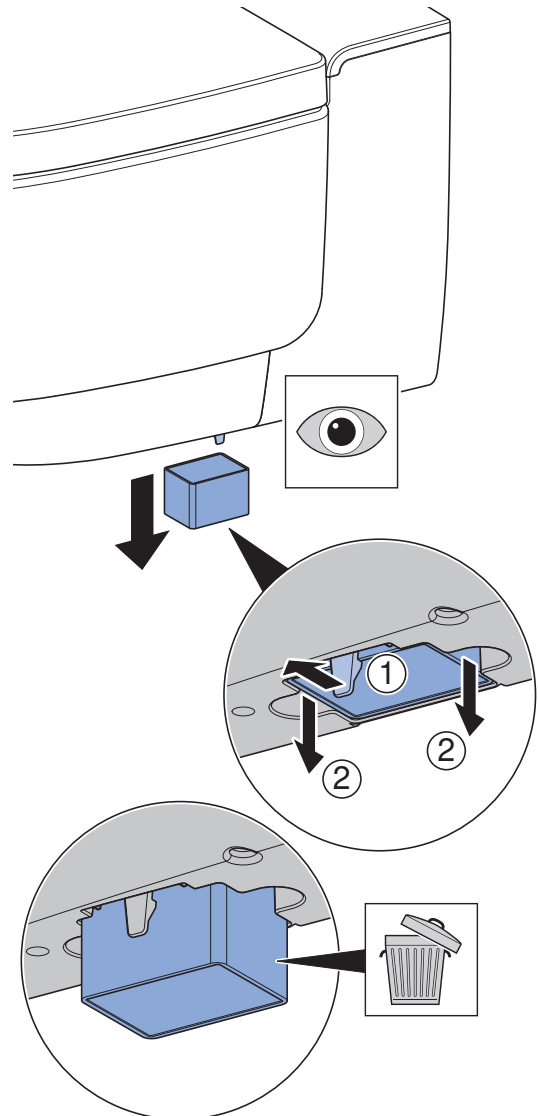
Confirm by pressing <OK>.

5 The display shows



Confirm by pressing <OK>.

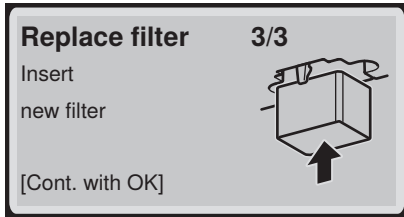
6 Bend the catch spring gently to the side to unfasten the ceramic honeycomb filter. At the same time, remove the used filter from the bracket.



Confirm by pressing <OK>.

7

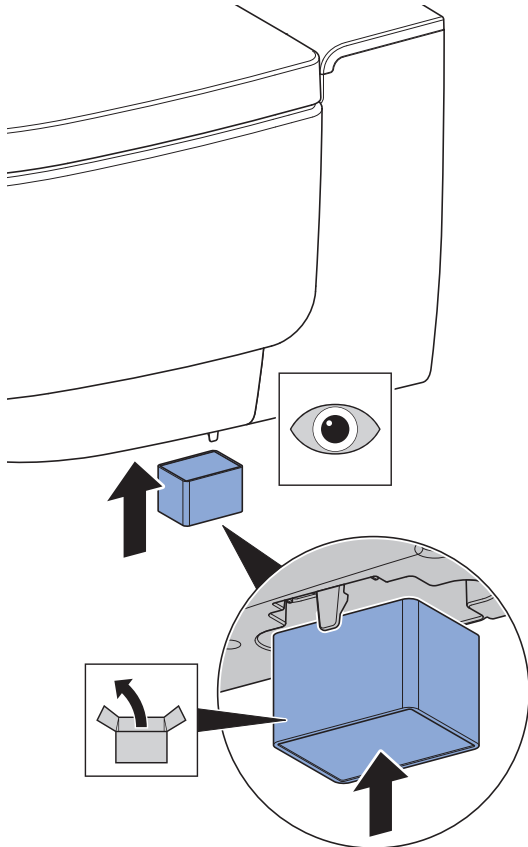
The display shows



Confirm by pressing <OK>.

8

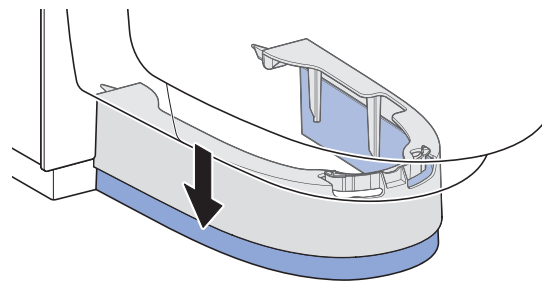
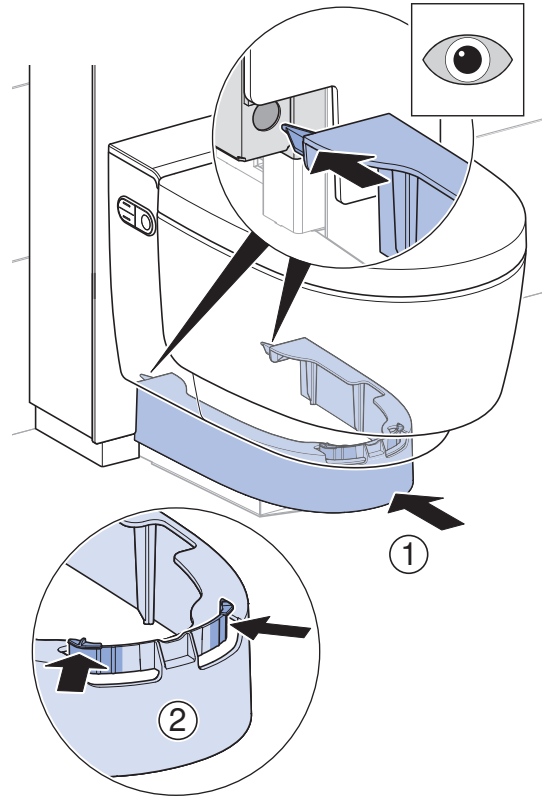
Insert the new filter.



✓ The catch spring is used to fasten the new filter.

9

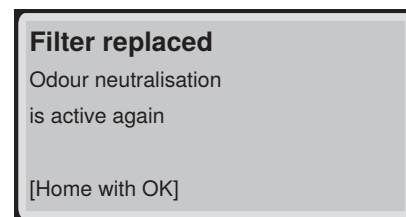
Fit the lower panel.



Confirm by pressing <OK>.

10

The display shows



Odour neutralisation will now function again.
Confirm by pressing <OK>.

Sustainability

Geberit Group and sustainability

As the European market leader in the sanitary industry, Geberit stands for water saving, resource efficiency and sustainable building. The Group has proven for decades that long-term business success is compatible with environmentally friendly actions and social policies. A company management geared to sustainability helps to save costs while minimizing risks at the same time. Geberit aims to act as a role model and set standards for its customers, suppliers and other partners. This means creating water-saving and sustainable products, using safe, environmentally friendly and resource-efficient production practices, engaging in purchasing and logistics activities with high environmental and ethical standards, and offering excellent working conditions for more than 12 000 dedicated and highly qualified employees worldwide. One way in which the company is showing its awareness of social responsibility is by participating in water relief projects around the world.

Ecodesign – ecobalance

The basis for sustainable products is formed by a systematic innovation process in which product materials and functional principles are chosen that are as environmentally friendly as possible, risks are minimised and a high degree of resource efficiency is strived for. We can supply a detailed ecobalance for this product upon request.

Tips for reducing the ecological footprint

This product was developed with the utmost care, also with regard to the consumption of energy, water and resources (see also technical data). You can reduce the ecological footprint of the product by observing the following recommendations:

- Switch off the device when you go on holiday.
- Interrupt the spray functionality manually in order to save hot water.
- Use small amounts of paper for drying.
- Switch off the heating function of the water heater when you do not need warm shower water.
- Use environmentally friendly cleaning agents.
- Carry out regular maintenance on the device and handle it with care in order to extend the service life.
- Return defective devices to Geberit or a designated partner for appropriate disposal.

Disposal

Disposal of waste electrical and electronic equipment



The symbol of the crossed-out wheeled bin means that waste electrical and electronic equipment (WEEE) must be disposed of separately and not with other non-recyclable waste. End users are legally obliged to return old equipment to public waste disposal authorities, distributors, or Geberit for proper disposal. Many distributors of electrical and electronic equipment are obliged to take back WEEE free of charge. Contact the responsible sales or service company to return the WEEE to Geberit.

Used batteries and accumulators that are not enclosed within the old equipment, as well as lamps that can be removed from the old equipment in a non-destructive manner, must be separated from the old equipment before being handed over to a disposal point.

If personal data is stored on the old equipment, end users themselves are responsible for deleting it before handing it over to a disposal point.

End user warranty

End user warranty

The following end user warranty ('warranty') is provided in addition to – and does not affect – your contractual partner's liability for defective products. The rights resulting from the statutory liability for defective products can be claimed free of charge and independently of this warranty. They are not restricted by this warranty.

This warranty only applies to permanently installed Geberit AquaClean products identified by a Geberit serial number ('product').

The warranty is only granted if the product has been installed in certain countries. A list of these countries can be found on the last page of the user manual ('list'). The warranty is provided by the Geberit company responsible for the country in which the product was installed ('Geberit'). The contact information and web address of Geberit can be found on the list.

1. Geberit warrants to the end user that the product is free from material defects and manufacturing faults. The warranty is valid for a period of two years, calculated from the installation date of the product at the end customer's site. The end customer may extend the warranty by a further year to a total of three years if, within 90 days of the installation date, they either complete and return the warranty card enclosed with the product to Geberit, or complete and submit the warranty form on the Geberit website (hereinafter referred to collectively as the 'warranty period').

Warranty scope:

- a) Within the first two years of the warranty period, a customer service representative authorised by Geberit shall rectify any material defects or manufacturing faults free of charge by repairing or replacing the defective parts.
 - b) In the third year of the warranty period, Geberit shall supply replacements for defective parts free of charge to the customer service representative authorised by Geberit and contracted by the end user to repair the product.
2. The end user shall not be entitled to assert more extensive claims against Geberit on the basis of this warranty.
 3. Claims can only be made under the warranty if:
 - a) The product has been installed and put into operation by an installation company or by a customer service representative authorised by Geberit. End customers may contact Geberit for an overview of the customer service representatives authorised by Geberit.
 - b) No modifications have been made to the product; in particular, no parts have been removed, replaced or added.
 - c) The product defect has not been caused by improper installation or use, nor can it be attributed to inadequate care or maintenance.
 4. To assert rights under this warranty, Geberit must be notified either verbally or in writing via the contact information provided in the list or on the Geberit website, and proof of purchase showing the product description and the installation date must be furnished. The message must include the following information as a minimum:
 - a) Name, address and email address of the customer who purchased the product; company name and phone number optional
 - b) Model and serial number of the product
 - c) Details of the product material defects or manufacturing faults
 5. This warranty is exclusively subject to the law of the country in which the product was installed. The United Nations Convention on Contracts for the International Sale of Goods is expressly excluded. If the customer is a tradesperson, a legal entity under public law or a special fund under public law, the place of jurisdiction for all disputes arising from contractual relationships between the customer and the provider shall be the registered office of Geberit.

Technical data and conformity

Technical data

Nominal voltage	230 V AC
Mains frequency	50 Hz
Power consumption	2000 W
Power consumption standby	≤ 0.5 W
Protection degree	IPX4
Protection class	I
Wireless technology	Bluetooth® Low Energy ¹⁾
Frequency range	2400–2483.5 MHz
Maximum output power	0 dBm
Mains connection	Mains connection via system plug with flexible three-wire sheathed cable
Spray time	30–50 s
Number of shower pressure settings, shower spray	5
Water temperature	34–40 °C
Operating temperature	5–40 °C
Flow pressure	0.5–10 bar
	50–1000 kPa
Minimum flow pressure	0.5 bar
	50 kPa
Calculated flow rate	0.03 l/s
Maximum load, WC seat	150 kg

¹⁾ The Bluetooth® brand and its logos are the property of Bluetooth SIG, Inc. and are under licence by Geberit.

Simplified EU Declaration of Conformity

Geberit International AG hereby declares that the radio equipment type Geberit AquaClean Mera is in compliance with Directive 2014/53/EU.

The full text of the EU declaration of conformity is available at the following Internet address:

<https://doc.geberit.com/968881000.pdf>.

Simplified UK Declaration of Conformity

Geberit International AG hereby declares that the radio equipment type Geberit AquaClean Mera is in compliance with the Radio Equipment Regulations 2017.

The full text of the UK declaration of conformity is available at the following Internet address:

<https://doc.geberit.com/970865000.pdf>

Contact

Headquarters

(CH / LI)

Geberit Vertriebs AG
Schachenstrasse 77
8645 Jona
Schweiz / Suisse / Svizzera
T +41 848 882 982
service.ch@geberit.com
www.geberit-aquaclean.ch
www.geberit.ch

Europe

(AT)

Geberit Vertriebs GmbH & Co. KG
Geberitstrasse 1
3140 Pottenbrunn / St. Pölten
Oesterreich
T +43 2742 401-500
aquaclean.at@geberit.com
www.geberit-aquaclean.at
www.geberit.at

(BE)

Geberit nv/sa
Ossegemstraat 24
1860 Meise
België / Belgique
T +32 2 252 01 11
aquaclean.be@geberit.com
www.geberit-aquaclean.be
www.geberit.be

(BG)

Юнитрейд Интернешънъл ЕООД
бул. "Черни връх" 161-А
1407 София
България
T +359 2 968 11 11
F +359 2 968 10 01
unitrade@unitrade-bg.com
www.unitrade-bg.com

(CZ)

Geberit spol. s r.o.
Sokolovská 2408/222
190 00 Praha 9
Česká Republika
T +420 284 689 670
sekretariat.cz@geberit.com
www.geberit-aquaclean.cz
www.geberit.cz

(DE)

Geberit Vertriebs GmbH Kundendienst/Servicestelle
Theuerbachstrasse 1
88630 Pfullendorf
Deutschland
T +49 75 52 934 10 11
service.de@geberit.com
www.geberit-aquaclean.de
www.geberit.de

(DK)

Geberit A/S
Lægårdsvej 26
8520 Lystrup
Danmark
T +45 86 74 10 86
F +45 86 74 10 98
service.dk@geberit.com
www.geberit-aquaclean.dk
www.geberit.dk

(ES / AD / GI)

Geberit S.A.U.
Plaza Europa, 2-4, 6ª planta
08902 L'Hospitalet del Llobregat (Barcelona)
España
T +34 900 23 24 25
info.iberia@geberit.com
www.geberit.es

(FI)

Geberit Oy
Lumijälki 2
01740 Vantaa
Suomi
T +358 (0)10 662 302
asiakaspalvelu@geberit.com
www.geberit.fi

(FR / MC)

Geberit s.a.r.l
ZA du Bois Gasseau - CS40252 Samoreau
77215 Avon Cedex
France
T +33 1 60 71 66 61
service.technique@geberit.com
www.geberit-aquaclean.fr
www.geberit.fr

(GB / IE)

Geberit Sales Ltd.
Geberit House
Edgehill Drive
Warwick CV34 6NH
UK
T +44 1926 516 800
T +44 1926 400 101
Eire T +44 1622 717 811
aquaclean.uk@geberit.com
www.geberit-aquaclean.co.uk
www.geberit.co.uk

(GR)

Geberit Greece S.M.P.C
572 Vouliagmenis Avenue
16452 Argyroupoli Athens
Hellas
sales.gr@geberit.com
www.geberit.gr

(HR / BA)

Geberit prodaja d.o.o. , Ruše
Podružnica Zagreb
Samoborska cesta 218
10090 Zagreb
Hrvatska
T +385 1 3867 800
service.hr@geberit.com
www.geberit.hr

(HU)

Geberit Kft.
1117 Budapest
Alíz utca 4.
Magyarország
T +36 1 204 4187
service.hu@geberit.com
www.geberit.hu

(IT)

Geberit Marketing e Distribuzione SA
Via Gerre 4
6928 Manno
Svizzera
T +41 91 611 92 92
F +41 91 611 93 93
aquaclean.it@geberit.com
www.geberit-aquaclean.it
www.geberit.it

(LU)

Geberit Luxembourg
5, rue Jules Ferry
4368 Belval (Sanem)
Luxembourg
T +352 54 52 26
F +352 54 54 91
service.lu@geberit.com
www.geberit.lu

(NL)

Geberit B.V.
Fultonbaan 15
3439 NE Nieuwegein
Nederland
T +31 (0)3060 57700
F +31 (0)3060 53392
service.nl@geberit.com
www.geberit-aquaclean.nl
www.geberit.nl

(NO)

Geberit AS
Luhrtoppen 2
1470 Lørenskog
Norge
T +47 67 97 82 00
gacservic.no@geberit.com
www.geberit-aquaclean.no
www.geberit.no

(PL)

Geberit Sp. z o.o.
ul. Postępu 1
02-676 Warszawa
T +48 22 376 01 01 lub
T +48 801 17 17 17
info.pl@geberit.com
www.geberit-aquaclean.pl
www.geberit.pl

(PT)

Geberit Tecnologia Sanitária, S.A
Rua Cupertino de Miranda, nº 12-2º A
1600-485 Lisboa
Portugal
T 800 25 26 27
info.iberia@geberit.com
www.geberit.pt

(RO)

Geberit S.R.L
Strada Izvor, Nr. 80, Et. 9
Sector 5, Bucuresti
România
T +40 21 330 30 80
info.ro@geberit.com
www.geberit.ro

(RS / MK / ME)

Geberit prodaja d.o.o.
Predstavništvo za Srbiju
Crnu Goru i Severnu Makedoniju
Vojvode Skopljanca 24
RS -11000 Beograd
Serbija
T + 381 11 30 96 430
service.rs@geberit.com
www.geberit.rs

(SE / IS)

Geberit AB
Folketshusgatan 1
Box 140
295 31 Bromölla
Sverige
T +46 456 480 00
aftersales.se@geberit.com
www.geberit-aquaclean.se
www.geberit.se

(SI / AL)

Geberit prodaja, d.o.o.
Bezena 55 A
2342 Ruše
Slovenija
T +386 1 586 22 00
service.si@geberit.com
www.geberit.si

(SK)

Geberit Slovensko s.r.o.
Karadžičova 10
821 08 Bratislava 2
Slovensko
T +421 2 49 20 30 71
sekretariat.sk@geberit.com
www.geberit.sk

(TR)

Geberit Tesisat Sistemleri Tic Ltd. Şti.
İçerenköy Mah. Engin Sok. No: 10
34752 Ataşehir-İstanbul
Türkiye
T +90 216 340 82 73
F +90 216 340 82 79
service.tr@geberit.com
geberit.com.tr

Africa and Middle East

(AE / BH / KW / OM / QA / SA)

Geberit International Sales AG

Dubai Branch

B702-B705

Building No. 1

Dubai Design District

AE-PO Box

282317 Dubai

United Arab Emirates

T +971 4 204 5477

F +971 4 204 5497

sales.gulf@geberit.com

www.geberit.ae

(IL)

Geberit Israel LTD

(North) Barkat 4 Industrial Park

Caesarea 3079897

Israel

T +972 4 6907207

isro@geberit.com

www.geberit.co.il

(ZA)

Geberit Southern Africa (Pty.) Ltd.

6 Meadowview Lane,

Meadowview Business Estate,

Longmeadow, Linbro Park

Johannesburg

South Africa

T +27 11 444 5070

F +27 11 444 5992

service.za@geberit.com

www.geberit.co.za

Asia

(CN)

吉博力(上海)贸易有限公司

地址: 上海市嘉定区南翔高科

技园区惠平路1515号

邮编: 201802

People's Republic of China

(CN)

Geberit (Shanghai) Trading Co., Ltd.

Nanxiang Hi-Tech, Jiading District, Shanghai

Nr. 1515, Huiping Road, Technology park

Zipcode 201802

People's Republic of China

T +86 21 61853188

Hotline 400-920-1100

www.geberit.com.cn

(SG / TH / JP / PH / KR / VN / KH / MY / TW / ID / HK / MO)

Geberit South East Asia Pte Ltd

8 Kallang Avenue, #17-09, Aperia Tower 1

Singapore 339509

Singapore

T +65 6250 4011

sales.sg@geberit.com

www.geberit.com.sg

Other countries

(GE / AZ / IQ / UZ)

Geberit Tesisat Sistemleri Tic Ltd. Şti.

İçerenköy Mah. Engin Sok. No: 10

34752 Ataşehir-İstanbul

Türkiye

T +90 216 340 82 73

F +90 216 340 82 79

service.tr@geberit.com

geberit.com.tr

(GISA / GR / EG / NG / KE / MA / UA)

Geberit International Sales

Neue Jonastrasse 59

8640 Rappenswil

Schweiz

T +41 848 882 982

T +41 55 221 62 00

sales@geberit.com

www.geberit-global.com.ch



Geberit International AG
Schachenstrasse 77, CH-8645 Jona
documentation@geberit.com
www.geberit.com